



# CENTRAL MAINE POWER

Manage your account online: [cmpco.com](http://cmpco.com)  
 Customer Service: 800.565.3181  
 Outage reporting line: 800.696.1000

## Your Messages

The average residential CMP Delivery amount includes about \$8 per month in non-CMP costs to support Maine public policy initiatives including net energy billing subsidies, low income assistance and energy efficiency. Learn more about CMP rates and public policy costs at [cmpco.com/PublicPolicyCosts](http://cmpco.com/PublicPolicyCosts).

On January 1, 2024, the CMP delivery price and the non-CMP Standard Offer Supply price decreased for residential customers. Please visit [cmpco.com/Pricing](http://cmpco.com/Pricing) for all rate class pricing.

If you need help paying your bill, you may be eligible for funds through the Home Energy Assistance Program, our Arrearage Management Program or our Electricity Lifeline Program. For more information, please visit [cmpco.com/HelpWithBill](http://cmpco.com/HelpWithBill), call us at 800.750.4000, or contact your local Community Action Agency.

This account is tax exempt.

Put your bill on autopilot with AutoPay and your electricity bill will be paid on time, every time. It's safe, secure and convenient. No mailing delays. Sign up today at [cmpco.com/AutoPay](http://cmpco.com/AutoPay).

CMP now provides kilowatts of demand (kW) on your monthly bill - please take a moment to review this information.

Account Number	Service Location	Amount Due	Date Due
3501-5352-731	BIDDEFORD SACO OOB TRANSIT 13 POMERLEAU ST BIDDEFORD ME 04005	\$1,870.14	03/07/2024
Invoice Number 718001905296			

## Your Account Summary

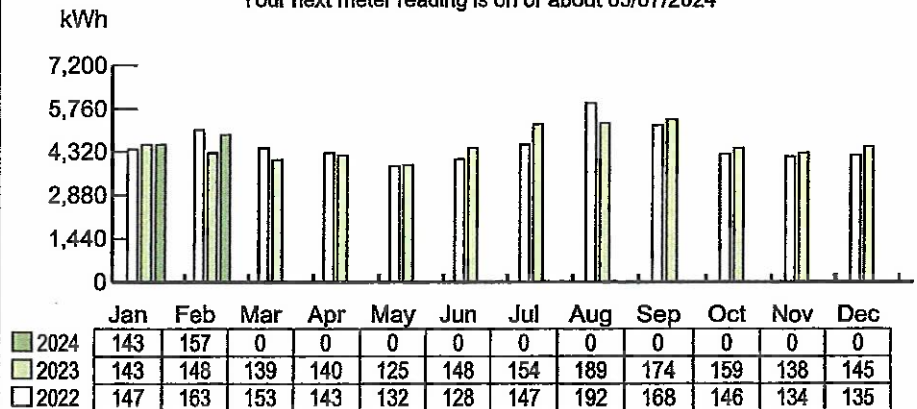
Prior Balance	\$896.30
Payments received through 02/09/2024	\$0.00
Balance Forward	\$896.30
Other Charges	+\$8.51
CMP Delivery	+\$413.40
Non-CMP Supplier CONSTELLATION NEWENERGY INC.	+\$551.93

Please pay by 03/07/2024 **\$1,870.14**

Handwritten notes:  
 81008-60400 = \$187.02  
 81001-60400 = \$1683.13  
 OK  
 134300

## Your Monthly Usage Summary(kWh)

Your next meter reading is on or about 03/07/2024



Your Average Daily Usage (kWh)

**Your Central Maine Power Delivery Service Account Detail****Prior Balance for Central Maine Power Delivery****\$442.30**

Payments received

**\$0.00****Balance Forward****\$442.30****Delivery Charges**

Delivery Charges: MGS Secondary 3 Phase ( 01/09/2024 - 02/08/2024 )

Service Charge - Three Phase

@ \$211.02

+\$211.02

Delivery Service:

4,880 KWH

@ \$0.004317

+\$21.07

**Demand Charge**

Demand

Measured

13.48 KW

Billed

13.48 KW

+\$181.31

**Total Current Delivery Charges****\$413.40****Other Charges**

Late Payment Charge

+\$4.20

**Total Other Charges****\$4.20****Central Maine Power Account Balance****\$859.90****Your Meter Details**

Read Cycle 04

Meter Number	Read Date	Meter Reading	Prior Read Date	Prior Meter Reading	Number of Days	Multiplier	Total kWh
L112537244	02/08/2024	18,289	01/08/2024	18,167	31	x40	4,880

**Mail Address Changes**☐

Please "X" for mail address changes and fill in your new mailing address information below.

---

---

---

---

If you are moving or need to stop service,  
please call a Customer Representative at 1.800.750.4000**Sign Up for Automatic Payments**☐

To sign up for automatic payments, please mark an "X" in the box, and sign and date below:

Signed \_\_\_\_\_ Date: \_\_\_\_\_  
Pay my bill (check one): \_\_\_\_\_ when my bill arrives  
\_\_\_\_\_ # of days before due date (circle one below)4 5 6 7 8 9 10 11 12 13 14 15 16 17 18 19 20 21 22 23  
(Example: Circle "15" to pay your bill 15 days before the due date.  
It does NOT mean your bill will be paid on the 15th of each month.)To complete your enrollment, please:  
1. Include a VOIDED check with this pay stub.  
2. Allow up to 30 days for processing.

Please do not write below this line.

You have chosen to purchase your electricity supply from: CONSTELLATION NEWENERGY INC.

Rates for electricity supply are not set by CMP yet we are required to bill and collect them on behalf of your Supplier.

**Supplier: CONSTELLATION NEWENERGY INC.**

Customer Support Hours: 1-844-636-3749 24-7

Phone: 1-844-636-3749



CONSTELLATION NEWENERGY INC. Account Number: 7158340

BIDDEFORD SACO OOB TRANSIT

13 POMERLEAU ST BIDDEFORD ME 04005

**Prior Balance for CONSTELLATION NEWENERGY INC. Supplier**

\$454.00

Payments received

\$0.00

**Balance Forward**

\$454.00

**New Supplier Charges**

Rate G0475 : ( 01/09/2024 - 02/08/2024 )

Energy Charge

4,880 KWH @ \$0.113100

+\$551.93

\$551.93

**Total New Supplier Charges**

**Other Charges**

Late Payment Charge

+\$4.31

**Total Other Charges**

\$4.31

**CONSTELLATION NEWENERGY INC. Supplier Account Balance**

\$1,010.24

### Supplier Information

CMP does not generate or supply electricity. We deliver your electricity. Your electricity is supplied by CONSTELLATION NEWENERGY INC..

CMP is your energy delivery company. Other companies, not regulated by the Maine Public Utilities Commission (MPUC), supply your electricity, which we deliver to you safely and reliably. CMP does not control the supply price though we are required to include and collect the costs in our monthly bills. Now you will see the name of your supplier and their itemized supply charges in BLUE on this page.

For information regarding your supply contract terms and conditions, please call your electricity supplier at the telephone number listed above.

You may learn more about energy supply and suppliers, and possibly find a better supply price, by visiting the Office of the Public Advocate (OPA) at [maine.gov/SupplyRates](http://maine.gov/SupplyRates), calling the OPA at 207.624.3687, or by visiting the MPUC at [maine.gov/mpuc](http://maine.gov/mpuc).

For additional information regarding Standard Offer supply, the default if you do not choose an electricity supplier, please visit the MPUC website: [maine.gov/mpuc/regulated-utilities/electricity/standard-offer-rates](http://maine.gov/mpuc/regulated-utilities/electricity/standard-offer-rates) or call them at 207.287.3831.

Visit us at [cmpco.com/UnderstandYourUsage](http://cmpco.com/UnderstandYourUsage) to see ways to manage and potentially reduce your usage.



# CENTRAL MAINE POWER

Manage your account online: [cmpco.com](http://cmpco.com)  
 Customer Service: 800.565.3181  
 Outage reporting line: 800.696.1000

## Your Messages

The average residential CMP Delivery amount includes about \$8 per month in non-CMP costs to support Maine public policy initiatives including net energy billing subsidies, low income assistance and energy efficiency. Learn more about CMP rates and public policy costs at [cmpco.com/PublicPolicyCosts](http://cmpco.com/PublicPolicyCosts).

If you need help paying your bill, you may be eligible for funds through the Home Energy Assistance Program, Maine's Homeowner Assistance Fund, our Arrearage Management Program or our Electricity Lifeline Program. For more information, please visit [cmpco.com/HelpWithBill](http://cmpco.com/HelpWithBill), call us at 800.750.4000, or contact your local Community Action Agency.

This account is tax exempt.

Make time to play with AutoPay! Your electricity bill will be paid on time, every time. AutoPay is safe, secure and convenient. No mailing delays. Sign up today at [cmpco.com/AutoPay](http://cmpco.com/AutoPay).

CMP now provides kilowatts of demand (kW) on your monthly bill - please take a moment to review this information.

Manage your account anytime, anywhere with our FREE Mobile App. You can view and pay your bill, enroll in eBill, access outage information, and more! Text APP to 267898 and we'll send you a link to download the app.

Account Number	Service Location	Amount Due	Date Due
3501-5352-731	BIDDEFORD SACO OOB TRANSIT 13 POMERLEAU ST BIDDEFORD ME 04005	\$764.31	01/03/2024
Invoice Number 715001876642			

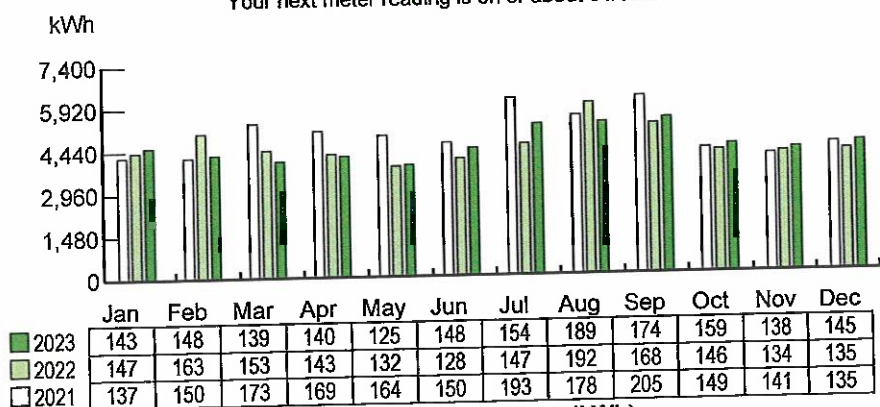
## Your Account Summary

Prior Balance	\$763.42
Payments received through 12/07/2023 - Thank you	-\$763.42
Balance Forward	\$0.00
CMP Delivery	+\$455.19
Non-CMP Supplier CONSTELLATION NEWENERGY INC.	+\$309.12
<b>Please pay by 01/03/2024</b>	<b>\$764.31</b>

① 134300 \$76.44 = 81008-60400  
 = 81001-60400  
 \$687.87 *OK*

## Your Monthly Usage Summary(kWh)

Your next meter reading is on or about 01/05/2024



Your Average Daily Usage (kWh)

**Your Central Maine Power Delivery Service Account Detail**

Prior Balance for Central Maine Power Delivery

\$468.10

Payments received - Thank you

-\$468.10

\$0.00

**Balance Forward****Delivery Charges**

Delivery Charges: MGS Secondary 3 Phase ( 11/07/2023 - 12/07/2023 )

@ \$205.08

+\$205.08

Service Charge - Three Phase

4,480 KWH

@ \$0.004317

+\$19.34

Delivery Service:

Demand Charge

Demand

Measured

14.08 KW

+\$230.77

Billed

14.08 KW

+\$455.19

**Total Current Delivery Charges**

+\$455.19

**Central Maine Power Account Balance****Your Meter Details**

Read Cycle 04

Meter Number	Read Date	Meter Reading	Prior Read Date	Prior Meter Reading	Number of Days	Multiplier	Total kWh
L112537244	12/07/2023	18,053	11/06/2023	17,941	31	x40	4,480

**Customer Information for Your Delivery Service**

Delivery rates are approved by the Maine Public Utilities Commission. For bills that cover both electricity supply and CMP delivery, CMP forwards energy-supply payments to the appropriate energy provider. For a schedule of CMP delivery rates, visit [cmpco.com](http://cmpco.com) or call us at 800.565.3181. To see how your Delivery Charges are impacted by Maine public policy, visit [cmpco.com/PublicPolicyCosts](http://cmpco.com/PublicPolicyCosts).

**What's a kilowatt-hour?**

Electric power is measured in watts. 1000 watts of power used for 1 hour is a kilowatt-hour (kWh) of energy. Example: a 100 watt bulb lit for 10 hours uses 1 kWh of energy.

**Sales-Tax Exemption**

Maine sales tax does not apply to the first 750 kilowatt-hours (kWh) of residential usage.

**Late-Payment Charge**

Bills are due on receipt. A rate of 0.949% will be applied each month to the unpaid balance after 25 days from the bill postmark.

**Estimated Bills**

When we cannot read your meter, we will estimate your usage for the month. You have the right to read your own meter. Visit [cmpco.com](http://cmpco.com) for more information, or call 800.565.3181.

**Questions?**

To ask a question or dispute a bill, you can email [customer.service@cmpco.com](mailto:customer.service@cmpco.com), or call 800.565.3181, or write to CMP Customer Service, 83 Edison Drive, Augusta, ME 04336.

**Payment Arrangements**

If you have trouble paying your bill, a payment plan may help. Call 800.686.4044 for more information.

**Maine Public Utilities Commission (MPUC)**

The MPUC's Consumer Assistance and Safety Division (CASD) investigates and resolves complaints, educates the public and ensures utilities remain in compliance with State statutes and Commission rules. To contact the CASD, call 800.452.4699 or visit [maine.gov/mpuc](http://maine.gov/mpuc).

**Mail Address Changes**
☐

Please "X" for mail address changes and fill in your new mailing address information below.

---



---



---



---

If you are moving or need to stop service, please call a Customer Representative at 1.800.750.4000

**Sign Up for Automatic Payments**
☐

To sign up for automatic payments, please mark an "X" in the box, and sign and date below:

Signed \_\_\_\_\_ Date: \_\_\_\_\_  
Pay my bill (check one): \_\_\_\_\_ when my bill arrives  
\_\_\_\_\_ # of days before due date (circle one below)

4 5 6 7 8 9 10 11 12 13 14 15 16 17 18 19 20 21 22 23  
(Example: Circle "15" to pay your bill 15 days before the due date.  
It does NOT mean your bill will be paid on the 15th of each month.)

To complete your enrollment, please:  
1. Include a VOIDED check with this pay stub.  
2. Allow up to 30 days for processing.

Please do not write below this line.



You have chosen to purchase your electricity supply from: CONSTELLATION NEWENERGY INC.  
Rates for electricity supply are not set by CMP yet we are required to bill and collect them on behalf of your Supplier.

**Supplier: CONSTELLATION NEWENERGY INC.**

Customer Support Hours: 1-844-636-3749 24-7  
Phone: 1-844-636-3749



CONSTELLATION NEWENERGY INC. Account Number: 7158340  
BIDDEFORD SACO OOB TRANSIT  
13 POMERLEAU ST BIDDEFORD ME 04005

**Prior Balance for CONSTELLATION NEWENERGY INC. Supplier**

Payments received - Thank you

\$295.32

-\$295.32

\$0.00

**Balance Forward**

**New Supplier Charges**

Rate G0139 : ( 11/07/2023 - 12/07/2023 )

4,480 KWH @ \$0.069000

+\$309.12

Energy Charge

\$309.12

**Total New Supplier Charges**

\$309.12

**CONSTELLATION NEWENERGY INC. Supplier Account Balance**

**Supplier Information**

CMP does not generate or supply electricity. We deliver your electricity. Your electricity is supplied by CONSTELLATION NEWENERGY INC..

CMP is your energy delivery company. Other companies, not regulated by the Maine Public Utilities Commission (MPUC), supply your electricity, which we deliver to you safely and reliably. CMP does not control the supply price though we are required to include and collect the costs in our monthly bills. Now you will see the name of your supplier and their itemized supply charges in BLUE on this page.

For information regarding your supply contract terms and conditions, please call your electricity supplier at the telephone number listed above.

You may learn more about energy supply and suppliers, and possibly find a better supply price, by visiting the Office of the Public Advocate (OPA) at [maine.gov/SupplyRates](http://maine.gov/SupplyRates), calling the OPA at 207.624.3687, or by visiting the MPUC at [maine.gov/mpuc](http://maine.gov/mpuc).

For additional information regarding Standard Offer supply, the default if you do not choose an electricity supplier, please visit the MPUC website: [maine.gov/mpuc/regulated-utilities/electricity/standard-offer-rates](http://maine.gov/mpuc/regulated-utilities/electricity/standard-offer-rates) or call them at 207.287.3831.

Visit us at [cmpco.com/UnderstandYourUsage](http://cmpco.com/UnderstandYourUsage) to see ways to manage and potentially reduce your usage.



# CENTRAL MAINE POWER

Manage your account online: [cmpco.com](http://cmpco.com)  
 Customer Service: 800.565.3181  
 Outage reporting line: 800.696.1000

Account Number	Service Location	Amount Due	Date Due
3501-5352-731	BIDDEFORD SACO OOB TRANSIT 13 POMERLEAU ST	\$763.42	12/04/2023
Invoice Number 709001890841	BIDDEFORD ME 04005		

## Your Account Summary

Prior Balance	\$783.67
Payments received through 11/06/2023 - Thank you	-\$783.67
Balance Forward	\$0.00
CMP Delivery	+\$468.10
Non-CMP Supplier <b>CONSTELLATION NEWENERGY INC.</b>	+\$295.32

**Please pay by 12/04/2023** **\$763.42**

① 134300 • 81008 - 60400 = \$763.35  
 81001 - 60400 = \$687.07

OK  
 [Signature]

## Your Messages

The average residential CMP Delivery amount includes about \$8 per month in non-CMP costs to support Maine public policy initiatives including net energy billing subsidies, low income assistance and energy efficiency. Learn more about CMP rates and public policy costs at [cmpco.com/PublicPolicyCosts](http://cmpco.com/PublicPolicyCosts).

If you need help paying your bill, you may be eligible for funds through the Home Energy Assistance Program, Maine's Homeowner Assistance Fund, our Arrearage Management Program or our Electricity Lifeline Program. For more information, please visit [cmpco.com/HelpWithBill](http://cmpco.com/HelpWithBill), call us at 800.750.4000, or contact your local Community Action Agency.

This account is tax exempt.

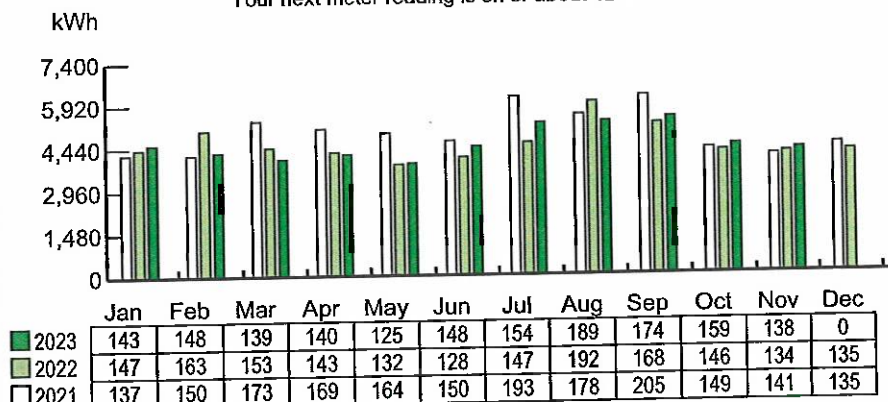
Make time to play with AutoPay! Your electricity bill will be paid on time, every time. AutoPay is safe, secure and convenient. No mailing delays. Sign up today at [cmpco.com/AutoPay](http://cmpco.com/AutoPay).

CMP now provides kilowatts of demand (kW) on your monthly bill - please take a moment to review this information.

Manage your account anytime, anywhere with our FREE Mobile App. You can view and pay your bill, enroll in eBill, access outage information, and more! Text APP to 267898 and we'll send you a link to download the app.

## Your Monthly Usage Summary(kWh)

Your next meter reading is on or about 12/06/2023



Your Average Daily Usage (kWh)

**Your Central Maine Power Delivery Service Account Detail****Prior Balance for Central Maine Power Delivery**

\$477.31

Payments received - Thank you

-\$477.31

\$0.00**Balance Forward****Delivery Charges**

Delivery Charges: MGS Secondary 3 Phase ( 10/07/2023 - 11/06/2023 )

Service Charge - Three Phase

Delivery Service:

Demand Charge

Demand

Measured

Billed

@ \$205.08  
4,280 KWH @ \$0.004317

+\$205.08

+\$18.48

14.92 KW

14.92 KW

+\$244.54

\$468.10**Total Current Delivery Charges**\$468.10**Central Maine Power Account Balance****Your Meter Details**

Read Cycle 04

Meter Number	Read Date	Meter Reading	Prior Read Date	Prior Meter Reading	Number of Days	Multiplier	Total kWh
L112537244	11/06/2023	17,941	10/06/2023	17,834	31	x40	4,280

**Customer Information for Your Delivery Service**

Delivery rates are approved by the Maine Public Utilities Commission. For bills that cover both electricity supply and CMP delivery, CMP forwards energy-supply payments to the appropriate energy provider. For a schedule of CMP delivery rates, visit [cmpco.com](http://cmpco.com) or call us at 800.565.3181. To see how your Delivery Charges are impacted by Maine public policy, visit [cmpco.com/PublicPolicyCosts](http://cmpco.com/PublicPolicyCosts).

**What's a kilowatt-hour?**

Electric power is measured in watts. 1000 watts of power used for 1 hour is a kilowatt-hour (kWh) of energy. Example: a 100 watt bulb lit for 10 hours uses 1 kWh of energy.

**Sales-Tax Exemption**

Maine sales tax does not apply to the first 750 kilowatt-hours (kWh) of residential usage.

**Late-Payment Charge**

Bills are due on receipt. A rate of 0.949% will be applied each month to the unpaid balance after 25 days from the bill postmark.

**Estimated Bills**

When we cannot read your meter, we will estimate your usage for the month. You have the right to read your own meter. Visit [cmpco.com](http://cmpco.com) for more information, or call 800.565.3181.

**Questions?**

To ask a question or dispute a bill, you can email [customer.service@cmpco.com](mailto:customer.service@cmpco.com), or call 800.565.3181, or write to CMP Customer Service, 83 Edison Drive, Augusta, ME 04336.

**Payment Arrangements**

If you have trouble paying your bill, a payment plan may help. Call 800.686.4044 for more information.

**Maine Public Utilities Commission (MPUC)**

The MPUC's Consumer Assistance and Safety Division (CASD) investigates and resolves complaints, educates the public and ensures utilities remain in compliance with State statutes and Commission rules. To contact the CASD, call 800.452.4699 or visit [maine.gov/mpuc](http://maine.gov/mpuc).

**Mail Address Changes**
☐

Please "X" for mail address changes and fill in your new mailing address information below.

---



---



---



---

If you are moving or need to stop service, please call a Customer Representative at 1.800.750.4000

**Sign Up for Automatic Payments**
☐

To sign up for automatic payments, please mark an "X" in the box, and sign and date below:

Signed \_\_\_\_\_ Date: \_\_\_\_\_  
Pay my bill (check one): \_\_\_\_\_ when my bill arrives  
\_\_\_\_\_ # of days before due date (circle one below)

4 5 6 7 8 9 10 11 12 13 14 15 16 17 18 19 20 21 22 23  
(Example: Circle "15" to pay your bill 15 days before the due date.  
It does NOT mean your bill will be paid on the 15th of each month.)

To complete your enrollment, please:

1. Include a VOIDED check with this pay stub.
2. Allow up to 30 days for processing.

Please do not write below this line.



You have chosen to purchase your electricity supply from: CONSTELLATION NEWENERGY INC..  
Rates for electricity supply are not set by CMP yet we are required to bill and collect them on behalf of your Supplier.

**Supplier: CONSTELLATION NEWENERGY INC.**

Customer Support Hours: 1-844-636-3749 24-7  
Phone: 1-844-636-3749



CONSTELLATION NEWENERGY INC. Account Number: 7158340  
BIDDEFORD SACO OOB TRANSIT  
13 POMERLEAU ST BIDDEFORD ME 04005

**Prior Balance for CONSTELLATION NEWENERGY INC. Supplier**

Payments received - Thank you

\$306.36

-\$306.36

\$0.00

**Balance Forward**

**New Supplier Charges**

Rate G0139 : ( 10/07/2023 - 11/06/2023 )

Energy Charge

4,280 KWH @ \$0.069000

+\$295.32

\$295.32

**Total New Supplier Charges**

\$295.32

**CONSTELLATION NEWENERGY INC. Supplier Account Balance**

**Supplier Information**

CMP does not generate or supply electricity. We deliver your electricity. Your electricity is supplied by CONSTELLATION NEWENERGY INC..

CMP is your energy delivery company. Other companies, not regulated by the Maine Public Utilities Commission (MPUC), supply your electricity, which we deliver to you safely and reliably. CMP does not control the supply price though we are required to include and collect the costs in our monthly bills. Now you will see the name of your supplier and their itemized supply charges in BLUE on this page.

For information regarding your supply contract terms and conditions, please call your electricity supplier at the telephone number listed above.

You may learn more about energy supply and suppliers, and possibly find a better supply price, by visiting the Office of the Public Advocate (OPA) at [maine.gov/SupplyRates](http://maine.gov/SupplyRates), calling the OPA at 207.624.3687, or by visiting the MPUC at [maine.gov/mpuc](http://maine.gov/mpuc).

For additional information regarding Standard Offer supply, the default if you do not choose an electricity supplier, please visit the MPUC website: [maine.gov/mpuc/regulated-utilities/electricity/standard-offer-rates](http://maine.gov/mpuc/regulated-utilities/electricity/standard-offer-rates) or call them at 207.287.3831.

Visit us at [cmpco.com/UnderstandYourUsage](http://cmpco.com/UnderstandYourUsage) to see ways to manage and potentially reduce your usage.



# CENTRAL MAINE POWER

Manage your account online: **cmpco.com**  
 Customer Service: **800.565.3181**  
 Outage reporting line: **800.696.1000**

## Your Messages

The average residential CMP Delivery amount includes about \$8 per month in non-CMP costs to support Maine public policy initiatives including net energy billing subsidies, low income assistance and energy efficiency. Learn more about CMP rates and public policy costs at [cmpco.com/PublicPolicyCosts](http://cmpco.com/PublicPolicyCosts).

If you need help paying your bill, you may be eligible for funds through the Home Energy Assistance Program, Maine's Homeowner Assistance Fund, our Arrearage Management Program or our Electricity Lifeline Program. For more information, please visit [cmpco.com/HelpWithBill](http://cmpco.com/HelpWithBill), call us at 800.750.4000, or contact your local Community Action Agency.

Switch from your mailbox to your inbox with eBill. You can access your account at any time from your computer or mobile device. eBill is fast, secure, convenient, and good for the planet. Sign up today using our Mobile App or at [cmpco.com/eBill](http://cmpco.com/eBill).

This account is tax exempt.

Make time to play with AutoPay! Your electricity bill will be paid on time, every time. AutoPay is safe, secure and convenient. No mailing delays. Sign up today at [cmpco.com/AutoPay](http://cmpco.com/AutoPay).

CMP now provides kilowatts of demand (kW) on your monthly bill - please take a moment to review this information.

Account Number	Service Location	Amount Due	Date Due
3501-5352-731	BIDDEFORD SACO OOB TRANSIT 13 POMERLEAU ST BIDDEFORD ME 04005	\$783.67	11/02/2023
Invoice Number 709001864241			

## Your Account Summary

Prior Balance	\$901.69
Payments received through 10/06/2023 - Thank you	-\$901.69
Balance Forward	\$0.00
CMP Delivery	+\$477.31
Non-CMP Supplier CONSTELLATION NEWENERGY INC.	+\$306.36
Please pay by 11/02/2023	\$783.67

$$81008 - 60400 = \$78.37$$

$$81001 - 60400 = \$765.30$$

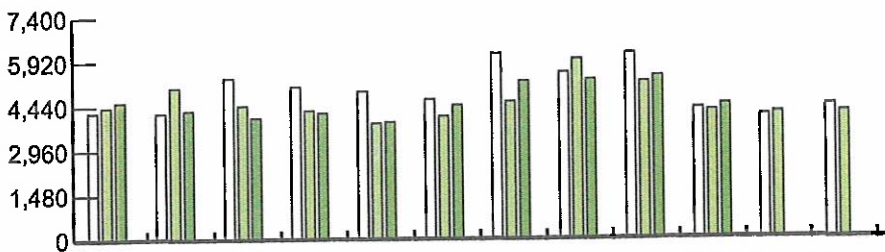
① 134300

OK [Signature]

## Your Monthly Usage Summary(kWh)

Your next meter reading is on or about 11/03/2023

kWh



## Your Average Daily Usage (kWh)

**Your Central Maine Power Delivery Service Account Detail****Prior Balance for Central Maine Power Delivery**

Payments received - Thank you

\$529.09

\* -529.09

\$0.00**Balance Forward****Delivery Charges**

Delivery Charges: MGS Secondary 3 Phase ( 09/09/2023 - 10/06/2023 )

Service Charge - Three Phase

4,440 KWH

@ \$205.08

+\$205.08

Delivery Service:

@ \$0.004317

+\$19.17

**Demand Charge**

Demand

Measured

15.44 KW

+\$253.06

Billed

15.44 KW

\$477.31**Total Current Delivery Charges**\$477.31**Central Maine Power Account Balance****Your Meter Details**

Read Cycle 04

Meter Number	Read Date	Meter Reading	Prior Read Date	Prior Meter Reading	Number of Days	Multiplier	Total kWh
L112537244	10/06/2023	17,834	09/08/2023	17,723	28	x40	4,440

**Customer Information for Your Delivery Service**

Delivery rates are approved by the Maine Public Utilities Commission. For bills that cover both electricity supply and CMP delivery, CMP forwards energy-supply payments to the appropriate energy provider. For a schedule of CMP delivery rates, visit [cmpco.com](http://cmpco.com) or call us at 800.565.3181. To see how your Delivery Charges are impacted by Maine public policy, visit [cmpco.com/PublicPolicyCosts](http://cmpco.com/PublicPolicyCosts).

**What's a kilowatt-hour?**

Electric power is measured in watts. 1000 watts of power used for 1 hour is a kilowatt-hour (kWh) of energy. Example: a 100 watt bulb lit for 10 hours uses 1 kWh of energy.

**Sales-Tax Exemption**

Maine sales tax does not apply to the first 750 kilowatt-hours (kWh) of residential usage.

**Late-Payment Charge**

Bills are due on receipt. A rate of 0.949% will be applied each month to the unpaid balance after 25 days from the bill postmark.

**Estimated Bills**

When we cannot read your meter, we will estimate your usage for the month. You have the right to read your own meter. Visit [cmpco.com](http://cmpco.com) for more information, or call 800.565.3181.

**Questions?**

To ask a question or dispute a bill, you can email [customer.service@cmpco.com](mailto:customer.service@cmpco.com), or call 800.565.3181, or write to CMP Customer Service, 83 Edison Drive, Augusta, ME 04336.

**Payment Arrangements**

If you have trouble paying your bill, a payment plan may help. Call 800.686.4044 for more information.

**Maine Public Utilities Commission (MPUC)**

The MPUC's Consumer Assistance and Safety Division (CASD) investigates and resolves complaints, educates the public and ensures utilities remain in compliance with State statutes and Commission rules. To contact the CASD, call 800.452.4699 or visit [maine.gov/mpuc](http://maine.gov/mpuc).

Bill Date 10/06/2023

Invoice Number 709001864241

Account Number 3501-5352-731

Page 3 of 3

You have chosen to purchase your electricity supply from: **CONSTELLATION NEWENERGY INC.**.  
Rates for electricity supply are not set by CMP yet we are required to bill and collect them on behalf of your Supplier.

**Supplier: CONSTELLATION NEWENERGY INC.**  
Customer Support Hours: 1-844-636-3749 24-7  
Phone: 1-844-636-3749



CONSTELLATION NEWENERGY INC. Account Number: 7158340  
BIDDEFORD SACO OOB TRANSIT  
3 POMERLEAU ST BIDDEFORD ME 04005

Prior Balance for CONSTELLATION NEWENERGY INC. Supplier			\$372.60
Payments received - Thank you			-\$372.60
			<u>\$0.00</u>
Balance Forward			
New Supplier Charges			
Rate G0139 : ( 09/09/2023 - 10/06/2023 )	4,440 KWH	@\$0.069000	+\$306.36
Energy Charge			<u>\$306.36</u>
Total New Supplier Charges			<u>\$306.36</u>
CONSTELLATION NEWENERGY INC. Supplier Account Balance			<u>\$306.36</u>

**Supplier Information**  
CMP does not generate or supply electricity. We deliver your electricity. Your electricity is supplied by CONSTELLATION NEWENERGY INC..

CMP is your energy delivery company. Other companies, not regulated by the Maine Public Utilities Commission (MPUC), supply your electricity, which we deliver to you safely and reliably. CMP does not control the supply price though we are required to include and collect the costs in our monthly bills. Now you will see the name of your supplier and their itemized supply charges in BLUE on this page.

For information regarding your supply contract terms and conditions, please call your electricity supplier at the telephone number listed above.

You may learn more about energy supply and suppliers, and possibly find a better supply price, by visiting the Office of the Public Advocate (OPA) at [maine.gov/SupplyRates](http://maine.gov/SupplyRates), calling the OPA at 207.624.3687, or by visiting the MPUC at [maine.gov/mpuc](http://maine.gov/mpuc).

For additional information regarding Standard Offer supply, the default if you do not choose an electricity supplier, please visit the MPUC website: [maine.gov/mpuc/regulated-utilities/electricity/standard-offer-rates](http://maine.gov/mpuc/regulated-utilities/electricity/standard-offer-rates) or call them at 207.287.3831.

Visit us at [cmpco.com/UnderstandYourUsage](http://cmpco.com/UnderstandYourUsage) to see ways to manage and potentially reduce your usage.

0015240 2/2







Manage your account online: [cmpco.com](http://cmpco.com)  
 Customer Service: 800.565.3181  
 Outage reporting line: 800.696.1000

### Your Messages

The average residential CMP Delivery amount includes about \$8 per month in non-CMP costs to support Maine public policy initiatives including net energy billing subsidies, low income assistance and energy efficiency. Learn more about CMP rates and public policy costs at [cmpco.com/PublicPolicyCosts](http://cmpco.com/PublicPolicyCosts).

If you need help paying your bill, you may be eligible for funds through Maine's Homeowner Assistance Fund, the Arrearage Management Program and the Electricity Lifeline Program. For more information, please visit [cmpco.com/HelpWithBill](http://cmpco.com/HelpWithBill) or call us at 800.750.4000 or contact your local Community Action Agency.

Switch from your mailbox to your inbox with eBill. You can access your account at any time from your computer or mobile device. eBill is fast, secure, convenient, and good for the planet. Sign up today using our Mobile App or at [cmpco.com/eBill](http://cmpco.com/eBill).

This account is tax exempt.

Make time to play with AutoPay! Your electricity bill will be paid on time, every time. AutoPay is safe, secure and convenient. No mailing delays. Sign up today at [cmpco.com/AutoPay](http://cmpco.com/AutoPay).

CMP now provides kilowatts of demand (kW) on your monthly bill - please take a moment to review this information.

Account Number	Service Location	Amount Due	Date Due
3501-5352-731	BIDDEFORD SACO OOB TRANSIT 13 POMERLEAU ST BIDDEFORD ME 04005	\$901.69	10/05/2023
Invoice Number 711001825814			

### Your Account Summary

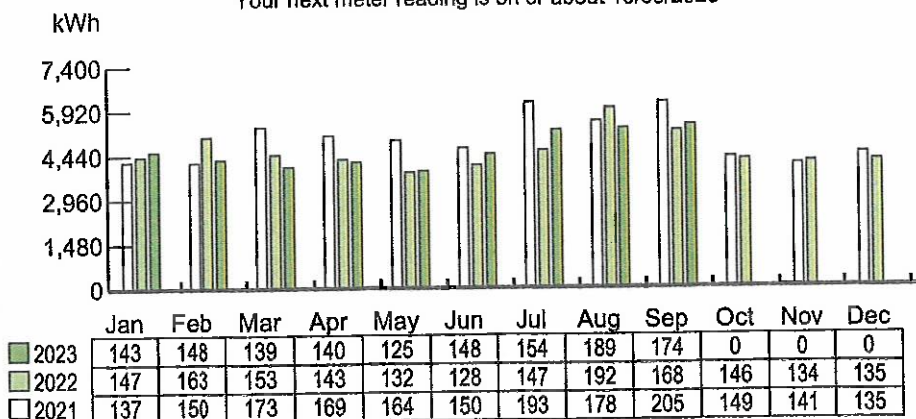
Prior Balance	\$968.99
Payments received through 09/08/2023 - Thank you	-\$968.99
Balance Forward	\$0.00
CMP Delivery	+\$529.09
Non-CMP Supplier CONSTELLATION NEWENERGY INC.	+\$372.60
<b>Please pay by 10/05/2023</b>	<b>\$901.69</b>

① 134300

• 81001 - 60400 = \$811.52  
 81008 - 60400 = \$90.17  
 OK *[Signature]*

### Your Monthly Usage Summary(kWh)

Your next meter reading is on or about 10/05/2023



Your Average Daily Usage (kWh)



2277

**Your Central Maine Power Delivery Service Account Detail**

<b>Prior Balance for Central Maine Power Delivery</b>		\$604.67
Payments received - Thank you		<u>-\$604.67</u>
<b>Balance Forward</b>		<b>\$0.00</b>
<b>Delivery Charges</b>		
Delivery Charges: MGS Secondary 3 Phase ( 08/09/2023 - 09/08/2023 )		+\$205.08
Service Charge - Three Phase		
Delivery Charges: MGS Secondary 3 Phase ( 08/09/2023 - 08/31/2023 )		+\$17.27
Delivery Service:	4,000 KWH	
Demand		
Measured	17.56 KW	
Billed	17.56 KW	+\$226.43
Delivery Charges: MGS Secondary 3 Phase ( 09/01/2023 - 09/08/2023 )		
Delivery Service:	1,400 KWH	+\$6.04
<b>Demand Charge</b>		
Demand		
Measured	17.56 KW	
Billed	17.56 KW	+\$74.27
<b>Total Current Delivery Charges</b>		<b>\$529.09</b>
<b>Central Maine Power Account Balance</b>		<b>\$529.09</b>

Your Meter Details		Read Cycle 04					
Meter Number	Read Date	Meter Reading	Prior Read Date	Prior Meter Reading	Number of Days	Multiplier	Total kWh
L112537244	09/08/2023	17,723	08/08/2023	17,588	31	x40	5,400

Bill Date 09/08/2023

Invoice Number 711001825814

Account Number 3501-5352-731

You have chosen to purchase your electricity supply from: CONSTELLATION NEWENERGY INC..  
Rates for electricity supply are not set by CMP yet we are required to bill and collect them on behalf of your Supplier.

**Supplier: CONSTELLATION NEWENERGY INC.**  
Customer Support Hours: 1-844-636-3749 24-7  
Phone: 1-844-636-3749



CONSTELLATION NEWENERGY INC. Account Number: 7158340  
BIDDEFORD SACO OOB TRANSIT  
13 POMERLEAU ST BIDDEFORD ME 04005

			\$364.32
Prior Balance for CONSTELLATION NEWENERGY INC. Supplier			- \$364.32
Payments received - Thank you			\$0.00
Balance Forward			
New Supplier Charges			
Rate G0139 : ( 08/09/2023 - 09/08/2023 )	5,400 KWH	@\$0.069000	+\$372.60
Energy Charge			\$372.60
Total New Supplier Charges			\$372.60
CONSTELLATION NEWENERGY INC. Supplier Account Balance			

**Supplier Information**

CMP does not generate or supply electricity. We deliver your electricity. Your electricity is supplied by CONSTELLATION NEWENERGY INC..

CMP is your energy delivery company. Other companies, not regulated by the Maine Public Utilities Commission (MPUC), supply your electricity, which we deliver to you safely and reliably. CMP does not control the supply price though we are required to include and collect the costs in our monthly bills. Now you will see the name of your supplier and their itemized supply charges in BLUE on this page.

For information regarding your supply contract terms and conditions, please call your electricity supplier at the telephone number listed above.

You may learn more about energy supply and suppliers, and possibly find a better supply price, by visiting the Office of the Public Advocate (OPA) at [maine.gov/SupplyRates](http://maine.gov/SupplyRates), calling the OPA at 207.624.3687, or by visiting the MPUC at [maine.gov/mpuc](http://maine.gov/mpuc).

For additional information regarding Standard Offer supply, the default if you do not choose an electricity supplier, please visit the MPUC website: [maine.gov/mpuc/regulated-utilities/electricity/standard-offer-rates](http://maine.gov/mpuc/regulated-utilities/electricity/standard-offer-rates) or call them at 207.287.3831.

Visit us at [cmpco.com/UnderstandYourUsage](http://cmpco.com/UnderstandYourUsage) to see ways to manage and potentially reduce your usage.



# CENTRAL MAINE POWER

Manage your account online: **cmpco.com**  
 Customer Service: **800.565.3181**  
 Outage reporting line: **800.696.1000**

## Your Messages

Electricity delivery prices were adjusted on July 1, 2023. Specific adjustments for your rate classification can be viewed on our website at [cmpco.com/pricing](http://cmpco.com/pricing).

If you need help paying your bill, you may be eligible for funds through Maine's Homeowner Assistance Fund, the Arrearage Management Program and the Electricity Lifeline Program. For more information, please visit [cmpco.com/HelpWithBill](http://cmpco.com/HelpWithBill) or call us at 800.750.4000 or contact your local Community Action Agency.

This account is tax exempt.

Switch from your mailbox to your inbox with eBill. You can access your account at any time from your computer or mobile device. eBill is fast, secure, convenient, and good for the planet. Sign up today using our Mobile App or at [cmpco.com/eBill](http://cmpco.com/eBill).

Make time to play with AutoPay! Your electricity bill will be paid on time, every time. AutoPay is safe, secure and convenient. No mailing delays. Sign up today at [cmpco.com/AutoPay](http://cmpco.com/AutoPay).

CMP now provides kilowatts of demand (kW) on your monthly bill - please take a moment to review this information.

Manage your account anytime, anywhere with our FREE Mobile App. You can view and pay your bill, enroll in eBill, access outage information, and more! Text APP to 267898 and we'll send you a link to download the app.

Account Number	Service Location	Amount Due	Date Due
3501-5352-731	BIDD SACO OOB TRANSIT 13 POMERLEAU ST BIDDEFORD ME 04005	\$968.99	09/05/2023
Invoice Number 702001867846			

## Your Account Summary

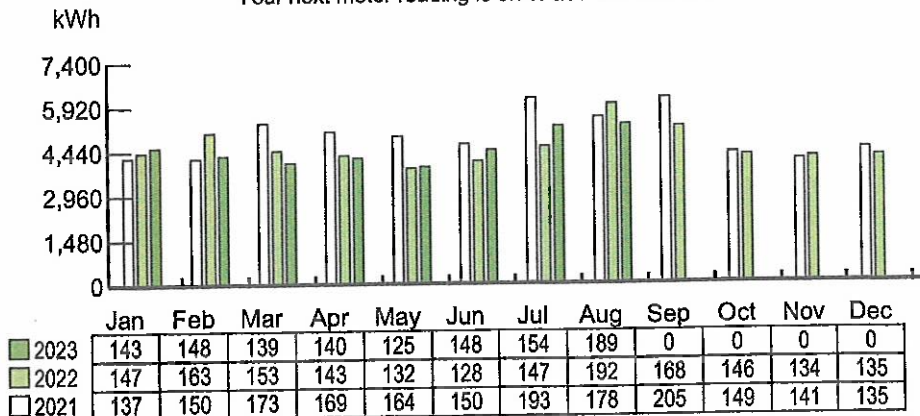
Prior Balance	\$738.90
Payments received through 08/08/2023 - Thank you	-\$738.90
Balance Forward	\$0.00
CMP Delivery	+\$604.67
Non-CMP Supplier CONSTELLATION NEWENERGY INC.	+\$364.32
Please pay by 09/05/2023	\$968.99

81001-60400 = \$72.09  
 81008-60400 = \$96.90  
 ① 134300

Cal 7/21

## Your Monthly Usage Summary(kWh)

Your next meter reading is on or about 09/07/2023



## Your Average Daily Usage (kWh)

Your Central Maine Power Delivery Service Account Detail

Prior Balance for Central Maine Power Delivery			\$377.34
Payments received - Thank you			-\$377.34
Balance Forward			\$0.00
Delivery Charges			
Delivery Charges: MGS Secondary 3 Phase ( 07/12/2023 - 08/08/2023 )			
Service Charge - Three Phase		@\$205.08	+\$205.08
Delivery Service:	5,280 KWH	@\$0.004317	+\$22.79
Demand Charge			
Demand			
Measured	21.68 KW		+\$376.80
Billed	21.68 KW		\$604.67
Total Current Delivery Charges			\$604.67
Central Maine Power Account Balance			\$604.67

Your Meter Details

Read Cycle 04

Meter Number	Read Date	Meter Reading	Prior Read Date	Prior Meter Reading	Number of Days	Multiplier	Total kWh
L112537244	08/08/2023	17,588	07/11/2023	17,456	28	x40	5,280

Customer Information for Your Delivery Service

Delivery rates are approved by the Maine Public Utilities Commission. For bills that cover both electricity supply and CMP delivery, CMP forwards energy-supply payments to the appropriate energy provider. For a schedule of CMP delivery rates, visit [www.cmpco.com](http://www.cmpco.com) or call us at 800.565.3181.

**What's a kilowatt-hour?**  
Electric power is measured in watts. 1000 watts of power used for 1 hour is a kilowatt-hour (kWh) of energy. Example: a 100 watt bulb lit for 10 hours uses 1 kWh of energy.

**Sales-Tax Exemption**  
Maine sales tax does not apply to the first 750 kilowatt-hours (kWh) of residential usage.

**Late-Payment Charge**  
Bills are due on receipt. A rate of 0.949% will be applied each month to the unpaid balance after 25 days from the bill postmark.

**Estimated Bills**  
When we cannot read your meter, we will estimate your usage for the month. You have the right to read your own meter. Visit [www.cmpco.com](http://www.cmpco.com) for more information, or call 800.565.3181.

**Questions?**  
To ask a question or dispute a bill, you can email [customer.service@cmpco.com](mailto:customer.service@cmpco.com), or call 800.565.3181, or write to CMP Customer Service, 83 Edison Drive, Augusta, ME 04336.

**Payment Arrangements**  
If you have trouble paying your bill, a payment plan may help. Call 800.686.4044 for more information.

**Maine Public Utilities Commission (MPUC)**  
The MPUC's Consumer Assistance and Safety Division (CASD) investigates and resolves complaints, educates the public and ensures utilities remain in compliance with State statutes and Commission rules. To contact the CASD, call 800.452.4699 or visit [www.maine.gov/mpuc](http://www.maine.gov/mpuc).



You have chosen to purchase your electricity supply from: CONSTELLATION NEWENERGY INC..  
Rates for electricity supply are not set by CMP yet we are required to bill and collect them on behalf of your Supplier.

**Supplier: CONSTELLATION NEWENERGY INC.**  
Customer Support Hours: 1-844-636-3749 24-7  
Phone: 1-844-636-3749



CONSTELLATION NEWENERGY INC. Account Number: 7158340  
BIDDEFORD SACO OOB TRANSIT  
3 POMERLEAU ST BIDDEFORD ME 04005

Prior Balance for CONSTELLATION NEWENERGY INC. Supplier			\$361.56
Payments received - Thank you			<u>-\$361.56</u>
			\$0.00
Balance Forward			
New Supplier Charges			
Rate G0139 : ( 07/12/2023 - 08/08/2023 )	5,280 KWH	@\$0.069000	<u>+\$364.32</u>
Energy Charge			<u>\$364.32</u>
Total New Supplier Charges			<u>\$364.32</u>
CONSTELLATION NEWENERGY INC. Supplier Account Balance			

**Supplier Information**  
CMP does not generate or supply electricity. We deliver your electricity. Your electricity is supplied by CONSTELLATION NEWENERGY INC..

CMP is your energy delivery company. Other companies, not regulated by the Maine Public Utilities Commission (MPUC), supply your electricity, which we deliver to you safely and reliably. CMP does not control the supply price though we are required to include and collect the costs in our monthly bills. Now you will see the name of your supplier and their itemized supply charges in BLUE on this page.

For information regarding your supply contract terms and conditions, please call your electricity supplier at the telephone number listed above.

You may learn more about energy supply and suppliers, and possibly find a better supply price, by visiting the Office of the Public Advocate (OPA) at [maine.gov/SupplyRates](http://maine.gov/SupplyRates), calling the OPA at 207.624.3687, or by visiting the MPUC at [maine.gov/mpuc](http://maine.gov/mpuc).

For additional information regarding Standard Offer supply, the default if you do not choose an electricity supplier, please visit the MPUC website: [maine.gov/mpuc/regulated-utilities/electricity/standard-offer-rates](http://maine.gov/mpuc/regulated-utilities/electricity/standard-offer-rates) or call them at 207.287.3831.

Visit us at [cmpco.com/UnderstandYourUsage](http://cmpco.com/UnderstandYourUsage) to see ways to manage and potentially reduce your usage.

004803 2/2







# CENTRAL MAINE POWER

Manage your account online: **cmpco.com**  
 Customer Service: **800.565.3181**  
 Outage reporting line: **800.696.1000**

Account Number	Service Location	Amount Due	Date Due
3501-5352-731	BIDD SACO OOB TRANSIT 13 POMERLEAU ST	\$738.90	08/07/2023
Invoice Number 703001830287	BIDDEFORD ME 04005		

## Your Account Summary

Prior Balance	\$584.55
Payments received through 07/11/2023 - Thank you	-\$584.55
Balance Forward	\$0.00
CMP Delivery	+\$377.34
Non-CMP Supplier CONSTELLATION NEWENERGY INC.	+\$361.56
Please pay by 08/07/2023	\$738.90

## Your Messages

Electricity delivery prices were adjusted on July 1, 2023. Specific adjustments for your rate classification can be viewed on our website at [cmpco.com/pricing](http://cmpco.com/pricing).

If you need help paying your bill, you may be eligible for funds through Maine's Homeowner Assistance Fund, the Arrearage Management Program and the Electricity Lifeline Program. For more information, please visit [cmpco.com/HelpWithBill](http://cmpco.com/HelpWithBill) or call us at 800.750.4000 or contact your local Community Action Agency.

This account is tax exempt.

Switch from your mailbox to your inbox with eBill. You can access your account at any time from your computer or mobile device. eBill is fast, secure, convenient, and good for the planet. Sign up today using our Mobile App or at [cmpco.com/eBill](http://cmpco.com/eBill).

Make time to play with AutoPay! Your electricity bill will be paid on time, every time. AutoPay is safe, secure and convenient. No mailing delays. Sign up today at [cmpco.com/AutoPay](http://cmpco.com/AutoPay).

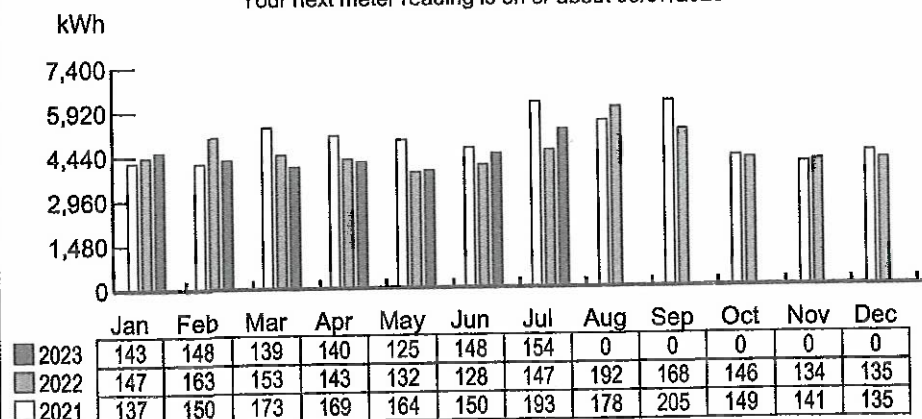
CMP now provides kilowatts of demand (kW) on your monthly bill - please take a moment to review this information.

Manage your account anytime, anywhere with our FREE Mobile App. You can view and pay your bill, enroll in eBill, access outage information, and more! Text APP to 267898 and we'll send you a link to download the app.

81001-60400 = \$665.01  
 81008-60400 = \$73.89  
 134300  
 8/7

## Your Monthly Usage Summary(kWh)

Your next meter reading is on or about 08/07/2023



Your Average Daily Usage (kWh)

# **Your Central Maine Power Delivery Service Account Detail**

**Prior Balance for Central Maine Power Delivery**

\$278.19

Payments received - Thank you

-\$278.19

**Balance Forward**

\$0.00

## **Delivery Charges**

Delivery Charges: MGS Secondary 3 Phase ( 06/08/2023 - 06/30/2023 )

+\$33.83

Service Charge - Three Phase

3,520 KWH

+\$8.21

Delivery Service:

Demand

Measured

16.64 KW

Billed

16.64 KW

+\$167.95

Delivery Charges: MGS Secondary 3 Phase ( 07/01/2023 - 07/11/2023 )

+\$66.35

Service Charge - Three Phase

1,720 KWH

+\$7.43

Delivery Service:

**Demand Charge**

Demand

Measured

16.64 KW

Billed

16.64 KW

+\$93.57

\$377.34

**Total Current Delivery Charges**

\$377.34

**Central Maine Power Account Balance**

## **Your Meter Details**

Read Cycle 04

Meter Number	Read Date	Meter Reading	Prior Read Date	Prior Meter Reading	Number of Days	Multiplier	Total kWh
L112537244	07/11/2023	17,456	06/07/2023	17,325	34	x40	5,240

Bill Date 07/11/2023

Invoice Number 703001830287

Account Number 3501-5352-731

You have chosen to purchase your electricity supply from: **CONSTELLATION NEWENERGY INC.**  
Rates for electricity supply are not set by CMP yet we are required to bill and collect them on behalf of your Supplier.

**Supplier: CONSTELLATION NEWENERGY INC.**  
Customer Support Hours: 1-844-636-3749 24-7  
Phone: 1-844-636-3749



CONSTELLATION NEWENERGY INC. Account Number: 7158340  
BIDD SACO OOB TRANSIT  
13 POMERLEAU ST BIDDEFORD ME 04005

**Prior Balance for CONSTELLATION NEWENERGY INC. Supplier**  
Payments received - Thank you

\$306.36  
-\$306.36  
\$0.00

**Balance Forward**

**New Supplier Charges**

Rate G0139 : ( 06/08/2023 - 07/11/2023 )

5,240 KWH @ \$0.069000

+\$361.56  
\$361.56

Energy Charge

**Total New Supplier Charges**

\$361.56

**CONSTELLATION NEWENERGY INC. Supplier Account Balance**

**Supplier Information**

CMP does not generate or supply electricity. We deliver your electricity. Your electricity is supplied by CONSTELLATION NEWENERGY INC..

CMP is your energy delivery company. Other companies, not regulated by the Maine Public Utilities Commission (MPUC), supply your electricity, which we deliver to you safely and reliably. CMP does not control the supply price though we are required to include and collect the costs in our monthly bills. Now you will see the name of your supplier and their itemized supply charges in BLUE on this page.

For information regarding your supply contract terms and conditions, please call your electricity supplier at the telephone number listed above.

You may learn more about energy supply and suppliers, and possibly find a better supply price, by visiting the Office of the Public Advocate (OPA) at [maine.gov/SupplyRates](http://maine.gov/SupplyRates), calling the OPA at 207.624.3687, or by visiting the MPUC at [maine.gov/mpuc](http://maine.gov/mpuc).

For additional information regarding Standard Offer supply, the default if you do not choose an electricity supplier, please visit the MPUC website: [maine.gov/mpuc/regulated-utilities/electricity/standard-offer-rates](http://maine.gov/mpuc/regulated-utilities/electricity/standard-offer-rates) or call them at 207.287.3831.

Visit us at [cmpco.com/UnderstandYourUsage](http://cmpco.com/UnderstandYourUsage) to see ways to manage and potentially reduce your usage.





# CENTRAL MAINE POWER

Manage your account online: **cmpco.com**  
 Customer Service: **1.800.565.3181**  
 Outage reporting line: **1.800.696.1000**

## Your Messages

If you need help paying your bill, you may be eligible for funds through Maine's Homeowner Assistance Fund Program, the Arrearage Management Program and the Electricity Lifeline Program. For more information, please visit [cmpco.com/HelpWithBill](http://cmpco.com/HelpWithBill) or call us at 800.750.4000.

View and pay your bill at home or on the go! With eBill, you can access your account at any time from your computer or mobile device. It's fast, secure, convenient, and good for the planet. Sign up today by using our Mobile App or visiting [cmpco.com/eBill](http://cmpco.com/eBill).

Put your bill on autopilot with AutoPay and your energy bill will be paid on time, every time. It's safe, secure and convenient. No mailing delays. Sign up today at [cmpco.com/AutoPay](http://cmpco.com/AutoPay).

This account is tax exempt.

CMP now provides kilowatts of demand (kW) on your monthly bill - please take a moment to review this information.

Manage your account anytime, anywhere with our FREE Mobile App. You can view and pay your bill, enroll in eBill, access outage information, and more! Text APP to 267898 and we'll send you a link to download the app.

Account Number	Service Location	Amount Due	Date Due
3501-5352-731	BIDD SACO OOB TRANSIT 13 POMERLEAU ST	\$584.55	07/05/2023
Invoice Number 717001708045	BIDDEFORD ME 04005		

## Your Account Summary

Prior Balance	\$514.76
Payments received through 06/07/2023 - Thank you	-\$514.76
Balance Forward	\$0.00
CMP Delivery	+\$278.19
Non-CMP Supplier <b>CONSTELLATION NEWENERGY INC.</b>	+\$306.36
<b>Please pay by 07/05/2023</b>	<b>\$584.55</b>

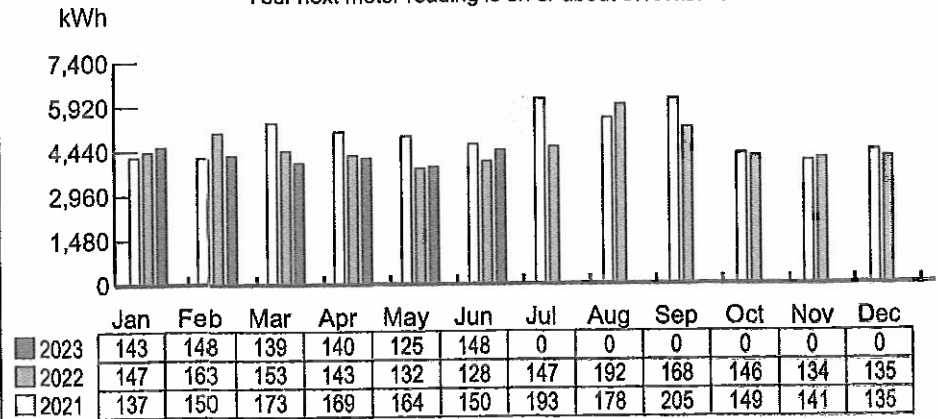
① 134300

81008 - 60400 = \$58.45  
 81001 - 60400 = \$526.10

*Cutler*

## Your Monthly Usage Summary(kWh)

Your next meter reading is on or about 07/07/2023



Your Average Daily Usage (kWh)

\*Estimated Reading

You have chosen to purchase your electricity supply from: CONSTELLATION NEWENERGY INC..  
Rates for electricity supply are not set by CMP yet we are required to bill and collect them on behalf of your Supplier.

**Supplier: CONSTELLATION NEWENERGY INC.**  
Customer Support Hours: 1-844-636-3749 24-7  
Phone: 1-844-636-3749



CONSTELLATION NEWENERGY INC. Account Number: 7158340  
BIDD SACO OOB TRANSIT  
13 POMERLEAU ST BIDDEFORD ME 04005

Prior Balance for CONSTELLATION NEWENERGY INC. Supplier			\$267.72
Payments received - Thank you			-\$267.72
Balance Forward			\$0.00
New Supplier Charges			
Rate G0139 : ( 05/09/2023 - 06/07/2023 )			
Energy Charge	4,440 KWH	@\$0.069000	+\$306.36
Total New Supplier Charges			\$306.36
CONSTELLATION NEWENERGY INC. Supplier Account Balance			\$306.36

**Supplier Information**  
CMP does not generate or supply electricity. We deliver your electricity. Your electricity is supplied by CONSTELLATION NEWENERGY INC..

CMP is your energy delivery company. Other companies, not regulated by the Maine Public Utilities Commission (MPUC), supply your electricity, which we deliver to you safely and reliably. CMP does not control the supply price though we are required to include and collect the costs in our monthly bills. Now you will see the name of your supplier and their itemized supply charges in BLUE on this page.

For information regarding your supply contract terms and conditions, please call your electricity supplier at the telephone number listed above.

You may learn more about energy supply and suppliers, and possibly find a better supply price, by visiting the Office of the Public Advocate (OPA) at [maine.gov/SupplyRates](http://maine.gov/SupplyRates), calling the OPA at 207.624.3687, or by visiting the MPUC at [maine.gov/mpuc](http://maine.gov/mpuc).

For additional information regarding Standard Offer supply, the default if you do not choose an electricity supplier, please visit the MPUC website: [maine.gov/mpuc/regulated-utilities/electricity/standard-offer-rates](http://maine.gov/mpuc/regulated-utilities/electricity/standard-offer-rates) or call them at 207.287.3831.

Visit us at [cmpco.com/UnderstandYourUsage](http://cmpco.com/UnderstandYourUsage) to see ways to manage and potentially reduce your usage.

005429 2/2





**Your Central Maine Power Delivery Service Account Detail****Prior Balance for Central Maine Power Delivery**

\$247.04

Payments received - Thank you

-\$247.04

**Balance Forward**

\$0.00

**Delivery Charges**

Delivery Charges: MGS Secondary 3 Phase ( 05/09/2023 - 06/07/2023 )

Service Charge - Three Phase

4,440 KWH

@ \$50.01

+\$50.01

Delivery Service:

@ \$0.002331

+\$10.35

**Demand Charge**

Demand

Measured

14.60 KW

Billed

14.60 KW

+\$217.83

**Total Current Delivery Charges**

\$278.19

**Central Maine Power Account Balance**

\$278.19

**Your Meter Details**

Read Cycle 04

Meter Number	Read Date	Meter Reading	Prior Read Date	Prior Meter Reading	Number of Days	Multiplier	Total kWh
L112537244	06/07/2023	17,325	05/08/2023	17,214	30	x40	4,440

**Customer Information for Your Delivery Service**

Delivery rates are approved by the Maine Public Utilities Commission. For bills that cover both electricity supply and CMP delivery, CMP forwards energy-supply payments to the appropriate energy provider. For a schedule of CMP delivery rates, visit [www.cmpco.com](http://www.cmpco.com) or call us at 1.800.565.3181.

**What's a kilowatt-hour?**

Electric power is measured in watts. 1000 watts of power used for 1 hour is a kilowatt-hour (kWh) of energy. Example: a 100 watt bulb lit for 10 hours uses 1 kWh of energy.

**Sales-Tax Exemption**

Maine sales tax does not apply to the first 750 kilowatt-hours (kWh) of residential usage.

**Late-Payment Charge**

Bills are due on receipt. A rate of 0.949% will be applied each month to the unpaid balance after 25 days from the bill postmark.

**Estimated Bills**

When we cannot read your meter, we will estimate your usage for the month. You have the right to read your own meter. Visit [www.cmpco.com](http://www.cmpco.com) for more information, or call 1.800.565.3181.

**Questions?**

To ask a question or dispute a bill, you can email [customer.service@cmpco.com](mailto:customer.service@cmpco.com), or call 1.800.565.3181, or write to CMP Customer Service, 83 Edison Drive, Augusta, ME 04336.

**Payment Arrangements**

If you have trouble paying your bill, a payment plan may help. Call 1.800.565.3181 for more information.

**Maine Public Utilities Commission (MPUC)**

The MPUC's Consumer Assistance and Safety Division (CASD) investigates and resolves complaints, educates the public and ensures utilities remain in compliance with State statutes and Commission rules. To contact the CASD, call 1.800.452.4699 or visit [www.maine.gov/mpuc](http://www.maine.gov/mpuc).



Manage your account online: **cmpco.com**  
 Customer Service: **1.800.565.3181**  
 Outage reporting line: **1.800.696.1000**

### Your Messages

If you need help paying your bill, you may be eligible for funds through Maine's Homeowner Assistance Fund Program, the Arrearage Management Program and the Electricity Lifeline Program. For more information, please visit [cmpco.com/HelpWithBill](http://cmpco.com/HelpWithBill) or call us at 800.750.4000.

This account is tax exempt.

Go eBill, our earth-friendly and convenient online billing service. With eBill, you can access your account at any time from your computer or mobile device. Sign up today by using our Mobile App or visiting [cmpco.com/eBill](http://cmpco.com/eBill).

Put your bill on autopilot with AutoPay and your energy bill will be paid on time, every time. It's safe, secure and convenient. No mailing delays. Sign up today at [cmpco.com/AutoPay](http://cmpco.com/AutoPay).

CMP now provides kilowatts of demand (kW) on your monthly bill - please take a moment to review this information.

Manage your account anytime, anywhere with our FREE Mobile App. You can view and pay your bill, enroll in eBill, access outage information, and more! Text APP to 267898 and we'll send you a link to download the app.

Account Number	Service Location	Amount Due	Date Due
3501-5352-731	BIDD SACO OOB TRANSIT 13 POMERLEAU ST	\$514.76	06/05/2023
Invoice Number	BIDDEFORD ME 04005		
713001707242			

### Your Account Summary

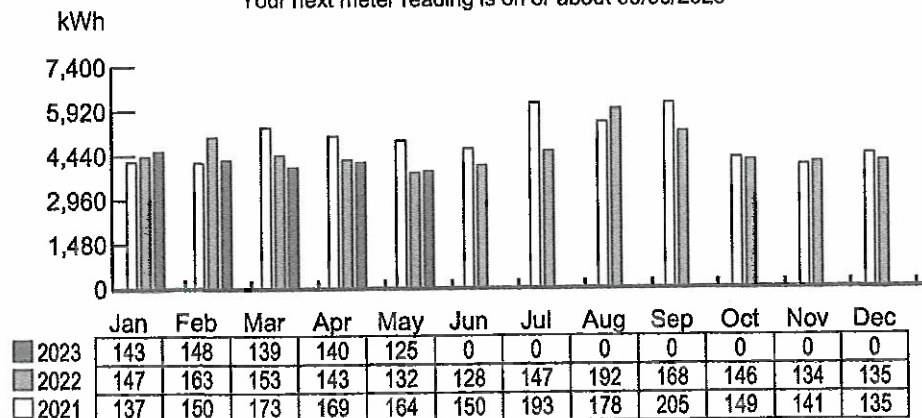
Prior Balance	\$555.50
Payments received through 05/08/2023 - Thank you	-\$555.50
Balance Forward	\$0.00
CMP Delivery	+\$247.04
Non-CMP Supplier CONSTELLATION NEWENERGY INC.	+\$267.72
Please pay by 06/05/2023	\$514.76

① 134300

• 81008 - 60400 = \$ 51.48  
 • 81001 - 60400 = \$ 463.28  
 OK. *[Signature]*

### Your Monthly Usage Summary(kWh)

Your next meter reading is on or about 06/06/2023



Your Average Daily Usage (kWh)

\*Estimated Reading

**Your Central Maine Power Delivery Service Account Detail****Prior Balance for Central Maine Power Delivery**

\$265.70

Payments received - Thank you

-\$265.70

\$0.00**Balance Forward****Delivery Charges**

Delivery Charges: MGS Secondary 3 Phase ( 04/08/2023 - 05/08/2023 )

Service Charge - Three Phase

@ \$50.01

+\$50.01

Delivery Service:

3,880 KWH

@ \$0.002331

+\$9.04

**Demand Charge**

Demand

Measured

12.60 KW

+\$187.99

Billed

12.60 KW

\$247.04**Total Current Delivery Charges**\$247.04**Central Maine Power Account Balance****Your Meter Details**

Read Cycle 04

Meter Number	Read Date	Meter Reading	Prior Read Date	Prior Meter Reading	Number of Days	Multiplier	Total kWh
L112537244	05/08/2023	17,214	04/07/2023	17,117	31	x40	3,880

**Customer Information for Your Delivery Service**

Delivery rates are approved by the Maine Public Utilities Commission. For bills that cover both electricity supply and CMP delivery, CMP forwards energy-supply payments to the appropriate energy provider. For a schedule of CMP delivery rates, visit [www.cmpco.com](http://www.cmpco.com) or call us at 1.800.565.3181.

**What's a kilowatt-hour?**

Electric power is measured in watts. 1000 watts of power used for 1 hour is a kilowatt-hour (kWh) of energy. Example: a 100 watt bulb lit for 10 hours uses 1 kWh of energy.

**Sales-Tax Exemption**

Maine sales tax does not apply to the first 750 kilowatt-hours (kWh) of residential usage.

**Late-Payment Charge**

Bills are due on receipt. A rate of 0.949% will be applied each month to the unpaid balance after 25 days from the bill postmark.

**Estimated Bills**

When we cannot read your meter, we will estimate your usage for the month. You have the right to read your own meter. Visit [www.cmpco.com](http://www.cmpco.com) for more information, or call 1.800.565.3181.

**Questions?**

To ask a question or dispute a bill, you can email [customer.service@cmpco.com](mailto:customer.service@cmpco.com), or call 1.800.565.3181, or write to CMP Customer Service, 83 Edison Drive, Augusta, ME 04336.

**Payment Arrangements**

If you have trouble paying your bill, a payment plan may help. Call 1.800.565.3181 for more information.

**Maine Public Utilities Commission (MPUC)**

The MPUC's Consumer Assistance and Safety Division (CASD) investigates and resolves complaints, educates the public and ensures utilities remain in compliance with State statutes and Commission rules. To contact the CASD, call 1.800.452.4699 or visit [www.maine.gov/mpuc](http://www.maine.gov/mpuc).

You have chosen to purchase your electricity supply from: **CONSTELLATION NEWENERGY INC.**.  
Rates for electricity supply are not set by CMP yet we are required to bill and collect them on behalf of your Supplier.

**Supplier: CONSTELLATION NEWENERGY INC.**  
Customer Support Hours: 1-844-636-3749 24-7  
Phone: 1-844-636-3749



CONSTELLATION NEWENERGY INC. Account Number: 7158340  
BIDD SACO OOB TRANSIT  
13 POMERLEAU ST BIDDEFORD ME 04005

Prior Balance for CONSTELLATION NEWENERGY INC. Supplier			\$289.80
Payments received - Thank you			<u>-\$289.80</u>
			\$0.00
Balance Forward			
New Supplier Charges			
Rate G0139 : ( 04/08/2023 - 05/08/2023 )			
Energy Charge	3,880 KWH	@\$0.069000	<u>+\$267.72</u>
			\$267.72
Total New Supplier Charges			<u>\$267.72</u>
CONSTELLATION NEWENERGY INC. Supplier Account Balance			<u>\$267.72</u>

**Supplier Information**  
CMP does not generate or supply electricity. We deliver your electricity. Your electricity is supplied by CONSTELLATION NEWENERGY INC..

CMP is your energy delivery company. Other companies, not regulated by the Maine Public Utilities Commission (MPUC), supply your electricity, which we deliver to you safely and reliably. CMP does not control the supply price though we are required to include and collect the costs in our monthly bills. Now you will see the name of your supplier and their itemized supply charges in BLUE on this page.

For information regarding your supply contract terms and conditions, please call your electricity supplier at the telephone number listed above.

You may learn more about energy supply and suppliers, and possibly find a better supply price, by visiting the Office of the Public Advocate (OPA) at [maine.gov/SupplyRates](http://maine.gov/SupplyRates), calling the OPA at 207.624.3687, or by visiting the MPUC at [maine.gov/mpuc](http://maine.gov/mpuc).

For additional information regarding Standard Offer supply, the default if you do not choose an electricity supplier, please visit the MPUC website: [maine.gov/mpuc/regulated-utilities/electricity/standard-offer-rates](http://maine.gov/mpuc/regulated-utilities/electricity/standard-offer-rates) or call them at 207.287.3831.

Visit us at [cmpco.com/UnderstandYourUsage](http://cmpco.com/UnderstandYourUsage) to see ways to manage and potentially reduce your usage.

005443 2/2





Manage your account online: **cmpco.com**  
 Customer Service: **1.800.565.3181**  
 Outage reporting line: **1.800.696.1000**

Account Number	Service Location	Amount Due	Date Due
3501-5352-731	BIDD SACO OOB TRANSIT 13 POMERLEAU ST BIDDEFORD ME 04005	\$555.50	05/04/2023
Invoice Number 712001692844			

### Your Account Summary

Prior Balance	\$553.63
Payments received through 04/07/2023 - Thank you	-\$553.63
Balance Forward	\$0.00
CMP Delivery	+\$265.70
Non-CMP Supplier <b>CONSTELLATION NEWENERGY INC.</b>	+\$289.80
<b>Please pay by 05/04/2023</b>	<b>\$555.50</b>

① 134300

$$\begin{aligned}
 &81008 - 60400 = \$55.55 \\
 &81001 - 60400 = \$495.95
 \end{aligned}$$

OK

*[Signature]*

### Your Messages

If you need help paying your bill, you may be eligible for funds through Maine's Homeowner Assistance Fund Program, the Arrearage Management Program, the Electricity Lifeline Program and the Home Energy Assistance Program. For more information, please visit [cmpco.com/HelpWithBill](http://cmpco.com/HelpWithBill) or call us at 800.750.4000.

This account is tax exempt.

Go eBill, our earth-friendly and convenient online billing service. With eBill, you can access your account at any time from your computer or mobile device. Sign up today by using our Mobile App or visiting [cmpco.com/eBill](http://cmpco.com/eBill).

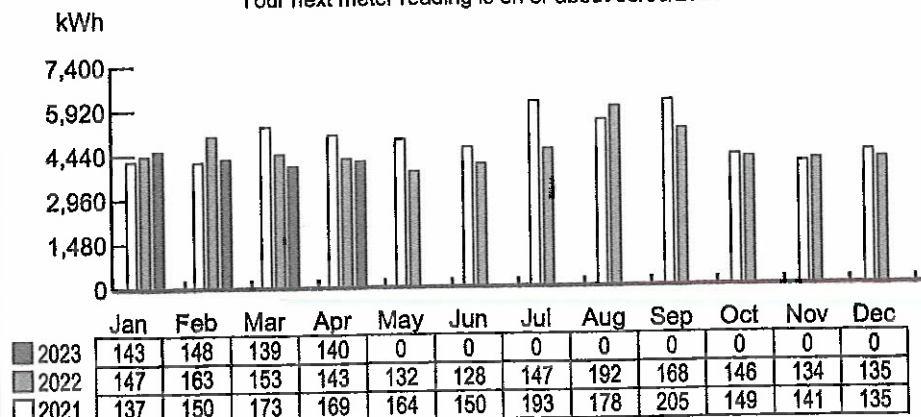
Put your bill on autopilot with AutoPay and your energy bill will be paid on time, every time. It's safe, secure and convenient. No mailing delays. Sign up today at [cmpco.com/AutoPay](http://cmpco.com/AutoPay).

CMP now provides kilowatts of demand (kW) on your monthly bill - please take a moment to review this information.

Manage your account anytime, anywhere with our FREE Mobile App. You can view and pay your bill, enroll in eBill, access outage information, and more! Text APP to 267898 and we'll send you a link to download the app.

### Your Monthly Usage Summary(kWh)

Your next meter reading is on or about 05/05/2023



Your Average Daily Usage (kWh)

\*Estimated Reading



# **Your Central Maine Power Delivery Service Account Detail**

## **Prior Balance for Central Maine Power Delivery**

Payments received - Thank you

\$274.87

-\$274.87

\$0.00

## **Balance Forward**

## **Delivery Charges**

Delivery Charges: MGS Secondary 3 Phase ( 03/09/2023 - 04/07/2023 )

Service Charge - Three Phase

Delivery Service:

Demand Charge

Demand

Measured

Billed

4,200 KWH

@\$50.01

@\$0.002331

+\$50.01

+\$9.79

13.80 KW

13.80 KW

+\$205.90

\$265.70

## **Total Current Delivery Charges**

\$265.70

## **Central Maine Power Account Balance**

## **Your Meter Details**

Read Cycle 04

Meter Number	Read Date	Meter Reading	Prior Read Date	Prior Meter Reading	Number of Days	Multiplier	Total kWh
L112537244	04/07/2023	17,117	03/08/2023	17,012	30	x40	4,200

## **Customer Information for Your Delivery Service**

Delivery rates are approved by the Maine Public Utilities Commission. For bills that cover both electricity supply and CMP delivery, CMP forwards energy-supply payments to the appropriate energy provider. For a schedule of CMP delivery rates, visit [www.cmpco.com](http://www.cmpco.com) or call us at 1.800.565.3181.

### **What's a kilowatt-hour?**

Electric power is measured in watts. 1000 watts of power used for 1 hour is a kilowatt-hour (kWh) of energy. Example: a 100 watt bulb lit for 10 hours uses 1 kWh of energy.

### **Sales-Tax Exemption**

Maine sales tax does not apply to the first 750 kilowatt-hours (kWh) of residential usage.

### **Late-Payment Charge**

Bills are due on receipt. A rate of 0.949% will be applied each month to the unpaid balance after 25 days from the bill postmark.

### **Estimated Bills**

When we cannot read your meter, we will estimate your usage for the month. You have the right to read your own meter. Visit [www.cmpco.com](http://www.cmpco.com) for more information, or call 1.800.565.3181.

### **Questions?**

To ask a question or dispute a bill, you can email [customer.service@cmpco.com](mailto:customer.service@cmpco.com), or call 1.800.565.3181, or write to CMP Customer Service, 83 Edison Drive, Augusta, ME 04336.

### **Payment Arrangements**

If you have trouble paying your bill, a payment plan may help. Call 1.800.565.3181 for more information.

### **Maine Public Utilities Commission (MPUC)**

The MPUC's Consumer Assistance and Safety Division (CASD) investigates and resolves complaints, educates the public and ensures utilities remain in compliance with State statutes and Commission rules. To contact the CASD, call 1.800.452.4699 or visit [www.maine.gov/mpuc](http://www.maine.gov/mpuc).



Bill Date 04/07/2023

Invoice Number 712001692844

Account Number 3501-5352-731

You have chosen to purchase your electricity supply from: **CONSTELLATION NEWENERGY INC.**  
 Rates for electricity supply are not set by CMP yet we are required to bill and collect them on behalf of your Supplier.

**Supplier: CONSTELLATION NEWENERGY INC.**

Customer Support Hours: 1-844-636-3749 24-7

Phone: 1-844-636-3749



CONSTELLATION NEWENERGY INC. Account Number: 7158340  
 BIDD SACO OOB TRANSIT  
 13 POMERLEAU ST BIDDEFORD ME 04005

**Prior Balance for CONSTELLATION NEWENERGY INC. Supplier**

Payments received - Thank you

\$278.76

-\$278.76

\$0.00

**Balance Forward**

**New Supplier Charges**

Rate G0139 : ( 03/09/2023 - 04/07/2023 )

4,200 KWH @ \$0.069000

+\$289.80

Energy Charge

\$289.80

**Total New Supplier Charges**

\$289.80

**CONSTELLATION NEWENERGY INC. Supplier Account Balance**

### Supplier Information

CMP does not generate or supply electricity. We deliver your electricity. Your electricity is supplied by CONSTELLATION NEWENERGY INC..

CMP is your energy delivery company. Other companies, not regulated by the Maine Public Utilities Commission (MPUC), supply your electricity, which we deliver to you safely and reliably. CMP does not control the supply price though we are required to include and collect the costs in our monthly bills. Now you will see the name of your supplier and their itemized supply charges in BLUE on this page.

For information regarding your supply contract terms and conditions, please call your electricity supplier at the telephone number listed above.

You may learn more about energy supply and suppliers, and possibly find a better supply price, by visiting the Office of the Public Advocate (OPA) at [maine.gov/SupplyRates](http://maine.gov/SupplyRates), calling the OPA at 207.624.3687, or by visiting the MPUC at [maine.gov/mpuc](http://maine.gov/mpuc).

For additional information regarding Standard Offer supply, the default if you do not choose an electricity supplier, please visit the MPUC website: [maine.gov/mpuc/regulated-utilities/electricity/standard-offerrates](http://maine.gov/mpuc/regulated-utilities/electricity/standard-offerrates) or call them at 207.287.3831.

Visit us at [cmpco.com/UnderstandYourUsage](http://cmpco.com/UnderstandYourUsage) to see ways to manage and potentially reduce your usage.

005208 2/2





# CENTRAL MAINE POWER

Manage your account online: **cmpco.com**  
 Customer Service: **1.800.565.3181**  
 Outage reporting line: **1.800.696.1000**

## Your Messages

If you need help paying your bill, you may be eligible for funds through Maine's Homeowner Assistance Fund program, the Arrearage Management program, the Electricity Lifeline program and the Home Energy Assistance program. For more information, please visit [cmpco.com/HelpWithBill](http://cmpco.com/HelpWithBill) or call us at 800.750.4000.

View and pay your bill at home or on the go! With eBill, you can access your account at any time from your computer or mobile device. It's fast, secure, convenient, and good for the planet. Sign up today by using our Mobile App or visiting [cmpco.com/eBill](http://cmpco.com/eBill).

Put your bill on autopilot with AutoPay and your energy bill will be paid on time, every time. It's safe, secure and convenient. No mailing delays. Sign up today at [cmpco.com/AutoPay](http://cmpco.com/AutoPay).

This account is tax exempt.

CMP now provides kilowatts of demand (kW) on your monthly bill - please take a moment to review this information.

Manage your account anytime, anywhere with our FREE Mobile App. You can view and pay your bill, enroll in eBill, access outage information, and more! Text APP to 267898 and we'll send you a link to download the app.

Account Number	Service Location	Amount Due	Date Due
3501-5352-731	BIDD SACO OOB TRANSIT 13 POMERLEAU ST BIDDEFORD ME 04005	\$553.63	04/04/2023
Invoice Number 724001486549			

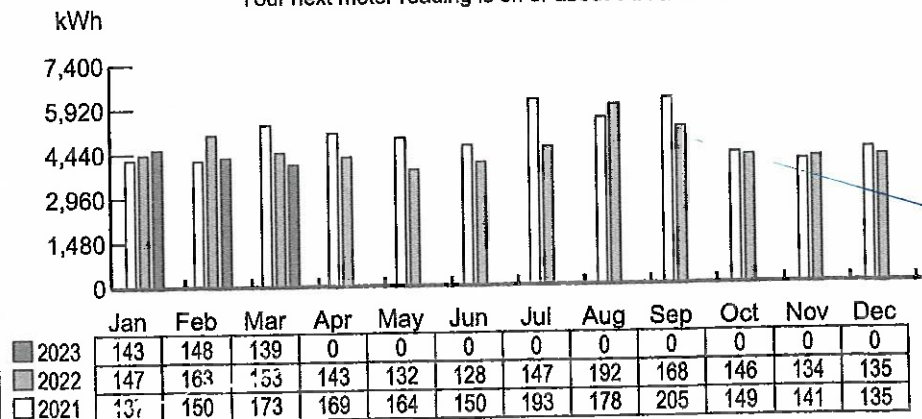
## Your Account Summary

Prior Balance	\$555.24
Payments received through 03/08/2023 - Thank you	- \$555.24
Balance Forward	\$0.00
CMP Delivery	+\$274.87
Non-CMP Supplier CONSTELLATION NEWENERGY INC.	+\$278.76
Please pay by 04/04/2023	\$553.63

① 134300 • 81008 - 60400 = 55.37  
 81001 - 60400 = 498.26  
 OK

## Your Monthly Usage Summary(kWh)

Your next meter reading is on or about 04/06/2023



Your Average Daily Usage (kWh)

\*Estimated Reading

# **Your Central Maine Power Delivery Service Account Detail**

## **Prior Balance for Central Maine Power Delivery**

\$259.92

Payments received - Thank you

-\$259.92

## **Balance Forward**

\$0.00

## **Delivery Charges**

Delivery Charges: MGS Secondary 3 Phase ( 02/08/2023 - 03/08/2023 )

Service Charge - Three Phase

@\$50.01

+\$50.01

Delivery Service:

4,040 KWH

@\$0.002331

+\$9.42

**Demand Charge**

Demand

Measured

14.44 KW

Billed

14.44 KW

+\$215.44

## **Total Current Delivery Charges**

\$274.87

## **Central Maine Power Account Balance**

\$274.87

## **Your Meter Details**

Read Cycle 04

Meter Number	Read Date	Meter Reading	Prior Read Date	Prior Meter Reading	Number of Days	Multiplier	Total kWh
L112537244	03/08/2023	17,012	02/07/2023	16,911	29	x40	4,040

## **Customer Information for Your Delivery Service**

Delivery rates are approved by the Maine Public Utilities Commission. For bills that cover both electricity supply and CMP delivery, CMP forwards energy-supply payments to the appropriate energy provider. For a schedule of CMP delivery rates, visit [www.cmpco.com](http://www.cmpco.com) or call us at 1.800.565.3181.

### **What's a kilowatt-hour?**

Electric power is measured in watts. 1000 watts of power used for 1 hour is a kilowatt-hour (kWh) of energy. Example: a 100 watt bulb lit for 10 hours uses 1 kWh of energy.

### **Questions?**

To ask a question or dispute a bill, you can email [customer.service@cmpco.com](mailto:customer.service@cmpco.com), or call 1.800.565.3181, or write to CMP Customer Service, 83 Edison Drive, Augusta, ME 04336.

### **Sales-Tax Exemption**

Maine sales tax does not apply to the first 750 kilowatt-hours (kWh) of residential usage.

### **Payment Arrangements**

If you have trouble paying your bill, a payment plan may help. Call 1.800.565.3181 for more information.

### **Late-Payment Charge**

Bills are due on receipt. A rate of 0.949% will be applied each month to the unpaid balance after 25 days from the bill postmark.

### **Maine Public Utilities Commission (MPUC)**

The MPUC's Consumer Assistance and Safety Division (CASD) investigates and resolves complaints, educates the public and ensures utilities remain in compliance with State statutes and Commission rules. To contact the CASD, call 1.800.452.4699 or visit [www.maine.gov/mpuc](http://www.maine.gov/mpuc).

### **Estimated Bills**

When we cannot read your meter, we will estimate your usage for the month. You have the right to read your own meter. Visit [www.cmpco.com](http://www.cmpco.com) for more information, or call 1.800.565.3181.



You have chosen to purchase your electricity supply from: CONSTELLATION NEWENERGY INC..  
Rates for electricity supply are not set by CMP yet we are required to bill and collect them on behalf of your Supplier.

**Supplier: CONSTELLATION NEWENERGY INC.**  
Customer Support Hours: 1-844-636-3749 24-7  
Phone: 1-844-636-3749



CONSTELLATION NEWENERGY INC. Account Number: 7158340  
BIDD SACO OOB TRANSIT  
13 POMERLEAU ST BIDDEFORD ME 04005

Prior Balance for CONSTELLATION NEWENERGY INC. Supplier			\$295.32
Payments received - Thank you			-\$295.32
Balance Forward			\$0.00
New Supplier Charges			
Rate G0139 : ( 02/08/2023 - 03/08/2023 )			
Energy Charge	4,040 KWH	@\$0.069000	+\$278.76
Total New Supplier Charges			\$278.76
CONSTELLATION NEWENERGY INC. Supplier Account Balance			\$278.76

**Supplier Information**  
CMP does not generate or supply electricity. We deliver your electricity. Your electricity is supplied by CONSTELLATION NEWENERGY INC..

For information regarding electricity supply options, please visit the Office of the Public Advocate website at: [maine.gov/meopa/electricity/electricity-supply](http://maine.gov/meopa/electricity/electricity-supply) or call them at 207.624.3687.

CMP provides billing services for your electricity supplier. We are required to bill and collect supplier charges and forward payments on your behalf, in accordance with MPUC rules.

For additional information regarding SOP supply, please visit the MPUC website: [maine.gov/mpuc/regulated-utilities/electricity/standard-offer-rates](http://maine.gov/mpuc/regulated-utilities/electricity/standard-offer-rates) or call them at 207.287.3831.

For information regarding your supply contract terms and conditions, please call your electricity supplier at the telephone number listed above.

Visit us at [cmpco.com/UnderstandYourUsage](http://cmpco.com/UnderstandYourUsage) to see ways to manage your usage. You can also choose your supplier, and possibly find a better supply price, or by visiting [maine.gov/mpuc](http://maine.gov/mpuc) or [maine.gov/meopa/electricity/electricity-supply](http://maine.gov/meopa/electricity/electricity-supply).

CMP is your energy delivery company. Other companies, not regulated by the MPUC, supply your electricity, which we deliver to you safely and reliably. CMP does not control the supply price though we are required to include and collect the costs in our monthly bills. Now you will see the name of your supplier and their itemized supply charges in BLUE on this page.

006118 2/2







# CENTRAL MAINE POWER

Manage your account online: **cmpco.com**  
 Customer Service: **1.800.565.3181**  
 Outage reporting line: **1.800.696.1000**

## Your Messages

If you need help paying your bill, you may be eligible for funds through Maine's Homeowner Assistance Fund program, the Arrearage Management program, the Electricity Lifeline program and the Home Energy Assistance program. For more information, please visit [cmpco.com/HelpWithBill](http://cmpco.com/HelpWithBill) or call us at 800.750.4000.

View and pay your bill at home or on the go! With eBill, you can access your account at any time from your computer or mobile device. It's fast, secure, convenient, and good for the planet. Sign up today by using our Mobile App or visiting [cmpco.com/eBill](http://cmpco.com/eBill).

Put your bill on autopilot with AutoPay and your energy bill will be paid on time, every time. It's safe, secure and convenient. No mailing delays. Sign up today at [cmpco.com/AutoPay](http://cmpco.com/AutoPay).

This account is tax exempt.

CMP now provides kilowatts of demand (kW) on your monthly bill - please take a moment to review this information.

Manage your account anytime, anywhere with our FREE Mobile App. You can view and pay your bill, enroll in eBill, access outage information, and more! Text APP to 267898 and we'll send you a link to download the app.

Account Number	Service Location	Amount Due	Date Due
3501-5352-731	BIDD SACO OOB TRANSIT 13 POMERLEAU ST BIDDEFORD ME 04005	\$555.24	03/06/2023
Invoice Number 706001676275			

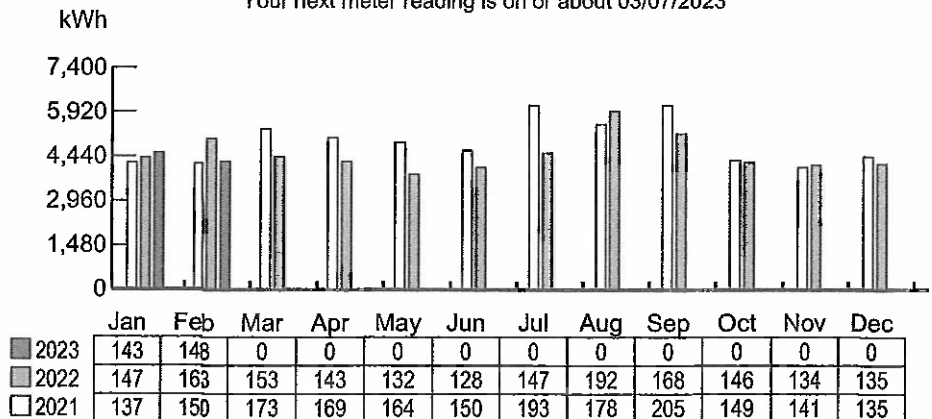
## Your Account Summary

Prior Balance	\$592.07
Payments received through 02/07/2023 - Thank you	-\$592.07
Balance Forward	\$0.00
CMP Delivery	+\$259.92
Non-CMP Supplier <b>CONSTELLATION NEWENERGY INC.</b>	+\$295.32
<b>Please pay by 03/06/2023</b>	<b>\$555.24</b>

134300  
~~81008-60400~~  
 81008-60400 = 55.53  
 81001-60400 = 499.71

## Your Monthly Usage Summary(kWh)

Your next meter reading is on or about 03/07/2023



## Your Average Daily Usage (kWh)

\*Estimated Reading

**Your Central Maine Power Delivery Service Account Detail****Prior Balance for Central Maine Power Delivery**

\$277.43

Payments received - Thank you

-\$277.43

**Balance Forward**

\$0.00

**Delivery Charges**

Delivery Charges: MGS Secondary 3 Phase ( 01/10/2023 - 02/07/2023 )

Service Charge - Three Phase

@ \$50.01

+\$50.01

Delivery Service:

4,280 KWH

@ \$0.002331

+\$9.98

**Demand Charge**

Demand

Measured

13.40 KW

Billed

13.40 KW

+\$199.93

**Total Current Delivery Charges**

\$259.92

**Central Maine Power Account Balance**

\$259.92

**Your Meter Details**

Read Cycle 04

Meter Number	Read Date	Meter Reading	Prior Read Date	Prior Meter Reading	Number of Days	Multiplier	Total kWh
L112537244	02/07/2023	16,911	01/09/2023	16,804	29	x40	4,280

**Customer Information for Your Delivery Service**

Delivery rates are approved by the Maine Public Utilities Commission. For bills that cover both electricity supply and CMP delivery, CMP forwards energy-supply payments to the appropriate energy provider. For a schedule of CMP delivery rates, visit [www.cmpco.com](http://www.cmpco.com) or call us at 1.800.565.3181.

**What's a kilowatt-hour?**

Electric power is measured in watts. 1000 watts of power used for 1 hour is a kilowatt-hour (kWh) of energy. Example: a 100 watt bulb lit for 10 hours uses 1 kWh of energy.

**Sales-Tax Exemption**

Maine sales tax does not apply to the first 750 kilowatt-hours (kWh) of residential usage.

**Late-Payment Charge**

Bills are due on receipt. A rate of 0.949% will be applied each month to the unpaid balance after 25 days from the bill postmark.

**Estimated Bills**

When we cannot read your meter, we will estimate your usage for the month. You have the right to read your own meter. Visit [www.cmpco.com](http://www.cmpco.com) for more information, or call 1.800.565.3181.

**Questions?**

To ask a question or dispute a bill, you can email [customer.service@cmpco.com](mailto:customer.service@cmpco.com), or call 1.800.565.3181, or write to CMP Customer Service, 83 Edison Drive, Augusta, ME 04336.

**Payment Arrangements**

If you have trouble paying your bill, a payment plan may help. Call 1.800.565.3181 for more information.

**Maine Public Utilities Commission (MPUC)**

The MPUC's Consumer Assistance and Safety Division (CASD) investigates and resolves complaints, educates the public and ensures utilities remain in compliance with State statutes and Commission rules. To contact the CASD, call 1.800.452.4699 or visit [www.maine.gov/mpuc](http://www.maine.gov/mpuc).



You have chosen to purchase your electricity supply from: CONSTELLATION NEWENERGY INC..

Rates for electricity supply are not set by CMP yet we are required to bill and collect them on behalf of your Supplier.

**Supplier: CONSTELLATION NEWENERGY INC.**

Customer Support Hours: 1-844-636-3749 24-7

Phone: 1-844-636-3749



CONSTELLATION NEWENERGY INC. Account Number: 7158340

BIDD SACO OOB TRANSIT

13 POMERLEAU ST BIDDEFORD ME 04005

**Prior Balance for CONSTELLATION NEWENERGY INC. Supplier**

Payments received - Thank you

\$314.64

-\$314.64

**Balance Forward**

\$0.00

**New Supplier Charges**

Rate G0139 : ( 01/10/2023 - 02/07/2023 )

Energy Charge

4,280 KWH @ \$0.069000

+\$295.32

**Total New Supplier Charges**

\$295.32

**CONSTELLATION NEWENERGY INC. Supplier Account Balance**

\$295.32

**Supplier Information**

CMP does not generate or supply electricity. We deliver your electricity. Your electricity is supplied by CONSTELLATION NEWENERGY INC..

For information regarding electricity supply options, please see the Office of the Public Advocate website at: <https://www.maine.gov/meopa/electricity/electricity-supply> or contact them at 207-624-3687.

CMP provides billing services for your electricity supplier. We are required to bill and collect supplier charges and forward payments on your behalf, in accordance with MPUC rules.

For additional information regarding SOP supply, please visit the MPUC website: [maine.gov/mpuc/regulated-utilities/electricity/standard-offer-rates](http://maine.gov/mpuc/regulated-utilities/electricity/standard-offer-rates) or call them at 207.287.3831.

For information regarding your supply contract terms and conditions, please call your electricity supplier at the telephone number listed above.

Standard Offer supply prices increased January 1. Visit us at [cmpco.com/UnderstandYourUsage](http://cmpco.com/UnderstandYourUsage) to see ways to manage your usage. You can also choose your supplier, and possibly find a better supply price, or by visiting [maine.gov/mpuc](http://maine.gov/mpuc) or [maine.gov/meopa/electricity/electricity-supply](http://maine.gov/meopa/electricity/electricity-supply).

CMP is your energy delivery company. Other companies, not regulated by the MPUC, supply your electricity, which we deliver to you safely and reliably. CMP does not control the supply price though we are required to include and collect the costs in our monthly bills. You will see your supplier and their supply charges itemized on this page.



# CENTRAL MAINE POWER

Manage your account online: **cmpco.com**  
 Customer assistance line: **1.800.565.3181**  
 Outage reporting line: **1.800.696.1000**

## Your Messages

If you need help paying your bill, you may be eligible for funds through Maine's Homeowner Assistance Fund program, the Arrearage Management program, the Electricity Lifeline program and the Home Energy Assistance program. For more information, please visit [cmpco.com/HelpWithBill](http://cmpco.com/HelpWithBill) or call us at 800.750.4000.

View and pay your bill at home or on the go! With eBill, you can access your account at any time from your computer or mobile device. It's fast, secure, convenient, and good for the planet. Sign up today by using our Mobile App or visiting [cmpco.com/eBill](http://cmpco.com/eBill).

Put your bill on autopilot with AutoPay and your energy bill will be paid on time, every time. It's safe, secure and convenient. No mailing delays. Sign up today at [cmpco.com/AutoPay](http://cmpco.com/AutoPay).

This account is tax exempt.

CMP now provides kilowatts of demand (kW) on your monthly bill - please take a moment to review this information.

We're building a smarter, stronger, more resilient grid by upgrading to more durable poles, using coated wire to better resist falling branches, trimming trees across our service area and investing in smart technology to reduce outage impacts.

Account Number	Service Location	Amount Due	Date Due
3501-5352-731	BIDD SACO OOB TRANSIT 13 POMERLEAU ST BIDDEFORD ME 04005	\$592.07	02/06/2023
Invoice Number 716001591393			

## Your Account Summary

Prior Balance	\$552.63
Payments received through 01/09/2023 - Thank you	-\$552.63
Balance Forward	\$0.00
Electricity Delivery Central Maine Power	+\$277.43
Electricity Supply CONSTELLATION NEWENERGY INC.	+\$314.64
Please pay by 02/06/2023	\$592.07

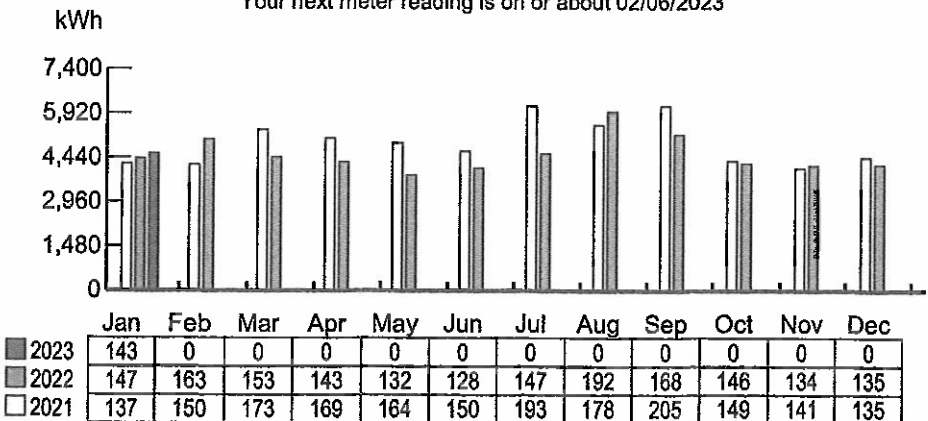
Handwritten notes and signature:

• 81008 - 60400 = \$59.20  
 • 81001 - 60400 = \$532.87  
 ① 134300

Signature: *CLT*

## Your Monthly Usage Summary(kWh)

Your next meter reading is on or about 02/06/2023



Your Average Daily Usage (kWh)

\*Estimated Reading

**Your Central Maine Power Delivery Service Account Detail****Prior Balance for Central Maine Power Delivery**

\$262.83

Payments received - Thank you

-\$262.83

**Balance Forward**

\$0.00

**Delivery Charges**

Delivery Charges: MGS Secondary 3 Phase ( 12/09/2022 - 12/31/2022 )

Service Charge - Three Phase

+\$35.94

Delivery Service:

3,240 KWH

+\$5.65

Demand

Measured

14.12 KW

Billed

14.12 KW

+\$159.44

Delivery Charges: MGS Secondary 3 Phase ( 01/01/2023 - 01/09/2023 )

Service Charge - Three Phase

+\$14.07

Delivery Service:

1,320 KWH

+\$3.08

Demand Charge

Demand

Measured

14.12 KW

Billed

14.12 KW

+\$59.25

**Total Current Delivery Charges**

\$277.43

**Central Maine Power Account Balance**

\$277.43

**Your Meter Details**

Read Cycle 04

Meter Number	Read Date	Meter Reading	Prior Read Date	Prior Meter Reading	Number of Days	Multiplier	Total kWh
L112537244	01/09/2023	16,804	12/08/2022	16,690	32	x40	4,560





**Customer Information for Your Delivery Service**

Delivery rates are approved by the Maine Public Utilities Commission. For bills that cover both electricity supply and CMP delivery, CMP forwards energy-supply payments to the appropriate energy provider. For a schedule of CMP delivery rates, visit [www.cmpco.com](http://www.cmpco.com) or call us at 1.800.565.3181.

**What's a kilowatt-hour?**

Electric power is measured in watts. 1000 watts of power used for 1 hour is a kilowatt-hour (kWh) of energy. Example: a 100 watt bulb lit for 10 hours uses 1 kWh of energy.

**Sales-Tax Exemption**

Maine sales tax does not apply to the first 750 kilowatt-hours (kWh) of residential usage.

**Late-Payment Charge**

Bills are due on receipt. A rate of 0.949% will be applied each month to the unpaid balance after 25 days from the bill postmark.

**Estimated Bills**

When we cannot read your meter, we will estimate your usage for the month. You have the right to read your own meter. Visit [www.cmpco.com](http://www.cmpco.com) for more information, or call 1.800.565.3181.

**Questions?**

To ask a question or dispute a bill, you can email [customer.service@cmpco.com](mailto:customer.service@cmpco.com), or call 1.800.565.3181, or write to CMP Customer Service, 83 Edison Drive, Augusta, ME 04336.

**Payment Arrangements**

If you have trouble paying your bill, a payment plan may help. Call 1.800.565.3181 for more information.

**Maine Public Utilities Commission (MPUC)**

The MPUC's Consumer Assistance and Safety Division (CASD) investigates and resolves complaints, educates the public and ensures utilities remain in compliance with State statutes and Commission rules. To contact the CASD, call 1.800.452.4699 or visit [www.maine.gov/mpuc](http://www.maine.gov/mpuc).





Manage your account online: **cmpco.com**  
 Customer assistance line: **1.800.565.3181**  
 Outage reporting line: **1.800.696.1000**

### Your Messages

If you need help paying your bill, you may be eligible for funds through Maine's Homeowner Assistance Fund program, the Arrearage Management program, the Electricity Lifeline Program and heating assistance. For more information, please visit [cmpco.com/HelpWithBill](http://cmpco.com/HelpWithBill) or call us at 800.750.4000.

Now is the time to go paperless with eBill. For every eBill signup we receive in November and December, we'll donate \$1.00, up to \$2,500, to Full Plates Full Potential. Sign up today at [cmpco.com/eBill](http://cmpco.com/eBill) and help us reach our goal!

Put your bill on autopilot with AutoPay and your energy bill will be paid on time, every time. It's safe, secure and convenient. No mailing delays. Sign up today at [cmpco.com/AutoPay](http://cmpco.com/AutoPay).

This account is tax exempt.

CMP now provides kilowatts of demand (kW) on your monthly bill - please take a moment to review this information.

Manage your account anytime, anywhere with our FREE Mobile App. You can view and pay your bill, enroll in eBill, access outage information, and more! Text APP to 267898 and we'll send you a link to download the app.

Account Number	Service Location	Amount Due	Date Due
3501-5352-731	BIDD SACO OOB TRANSIT 13 POMERLEAU ST BIDDEFORD ME 04005	\$552.63	01/04/2023
Invoice Number 716001565304			

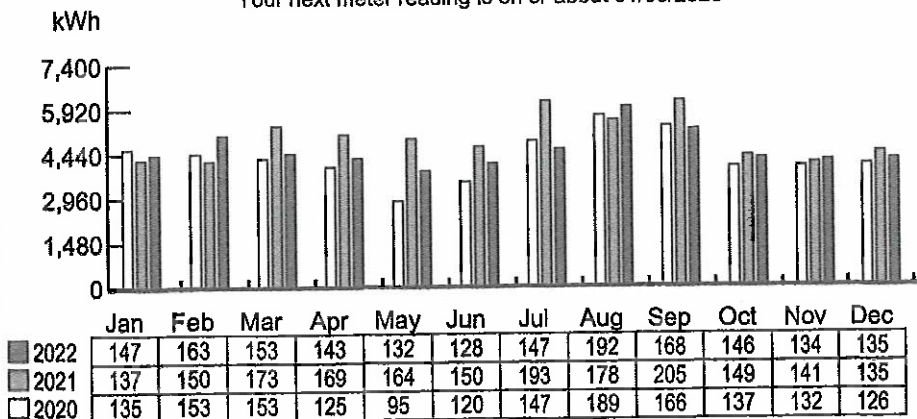
### Your Account Summary

Prior Balance	\$567.39
Payments received through 12/08/2022 - Thank you	-\$567.39
Balance Forward	\$0.00
Electricity Delivery Central Maine Power	+\$262.83
Electricity Supply CONSTELLATION NEWENERGY INC.	+\$289.80
Please pay by 01/04/2023	\$552.63

$81008 - 60400 = 55.26$   
 $81001 - 60400 = 497.37$   
 OK  
 134300

### Your Monthly Usage Summary(kWh)

Your next meter reading is on or about 01/06/2023



Your Average Daily Usage (kWh)

\*Estimated Reading

006007 1/2

1.6

**Your Central Maine Power Delivery Service Account Detail****Prior Balance for Central Maine Power Delivery****\$280.35**

Payments received - Thank you

**-\$280.35****Balance Forward****\$0.00****Delivery Charges**

Delivery Charges: MGS Secondary 3 Phase ( 11/08/2022 - 12/08/2022 )

Service Charge - Three Phase

@ \$50.01

+\$50.01

Delivery Service:

4,200 KWH

@ \$0.001745

+\$7.33

**Demand Charge**

Demand

Measured

13.08 KW

Billed

13.08 KW

+\$205.49

**Total Current Delivery Charges****\$262.83****Central Maine Power Account Balance****\$262.83****Your Meter Details**

Read Cycle 04

Meter Number	Read Date	Meter Reading	Prior Read Date	Prior Meter Reading	Number of Days	Multiplier	Total kWh
L112537244	12/08/2022	16,690	11/07/2022	16,585	31	x40	4,200

**Customer Information for Your Delivery Service**

Delivery rates are approved by the Maine Public Utilities Commission. For bills that cover both electricity supply and CMP delivery, CMP forwards energy-supply payments to the appropriate energy provider. For a schedule of CMP delivery rates, visit [www.cmpco.com](http://www.cmpco.com) or call us at 1.800.565.3181.

**What's a kilowatt-hour?**

Electric power is measured in watts. 1000 watts of power used for 1 hour is a kilowatt-hour (kWh) of energy. Example: a 100 watt bulb lit for 10 hours uses 1 kWh of energy.

**Sales-Tax Exemption**

Maine sales tax does not apply to the first 750 kilowatt-hours (kWh) of residential usage.

**Late-Payment Charge**

Bills are due on receipt. The 2022 rate of 0.267% will be applied each month to the unpaid balance after 25 days from the bill postmark.

**Estimated Bills**

When we cannot read your meter, we will estimate your usage for the month. You have the right to read your own meter. Visit [www.cmpco.com](http://www.cmpco.com) for more information, or call 1.800.565.3181.

**Questions?**

To ask a question or dispute a bill, you can email [customer.service@cmpco.com](mailto:customer.service@cmpco.com), or call 1.800.565.3181, or write to CMP Customer Service, 83 Edison Drive, Augusta, ME 04336.

**Payment Arrangements**

If you have trouble paying your bill, a payment plan may help. Call 1.800.565.3181 for more information.

**Maine Public Utilities Commission (MPUC)**

The MPUC's Consumer Assistance and Safety Division (CASD) investigates and resolves complaints, educates the public and ensures utilities remain in compliance with State statutes and Commission rules. To contact the CASD, call **1.800.452.4699** or visit [www.maine.gov/mpuc](http://www.maine.gov/mpuc).

**Your Electricity Supply Account Detail**

You have chosen CONSTELLATION NEWENERGY INC. as your electricity supplier



Customer Support Hours: 1-844-636-3749 24-7  
Phone: 1-844-636-3749

Your CONSTELLATION NEWENERGY INC. Account Number: 7158340  
BIDD SACO OOB TRANSIT  
13 POMERLEAU ST BIDDEFORD ME 04005

**Prior Balance for CONSTELLATION NEWENERGY INC.**

Payments received - Thank you

\$287.04

-\$287.04

**Balance Forward**

\$0.00

**New Supply Charges**

Rate G0139 : ( 11/08/2022 - 12/08/2022 )

Energy Charge

4,200 KWH @ \$0.069000

+\$289.80

**Total New Supply Charges**

\$289.80

**CONSTELLATION NEWENERGY INC. Account Balance**

\$289.80

**Messages About Your Electricity Supply**

CMP delivers your electricity. Your electricity supply is provided by CONSTELLATION NEWENERGY INC..

For information regarding electricity supply options, please see the Office of the Public Advocate website at: <https://www.maine.gov/meopa/electricity/electricity-supply> or contact them at 207-624-3687.

Central Maine Power provides billing services for your electricity supplier. Supply payments are forwarded on your behalf, in accordance with the Maine Public Utilities Commission (MPUC) rules.

For additional information regarding SOP supply, please visit the MPUC website: [maine.gov/mpuc/regulated-utilities/electricity/standard-offer-rates](http://maine.gov/mpuc/regulated-utilities/electricity/standard-offer-rates) or call them at 207.287.3831.

For information regarding your supply contract terms and conditions, please call your electricity supplier at the telephone number listed above.

Visit us at [cmpco.com/UnderstandYourUsage](http://cmpco.com/UnderstandYourUsage) to see how you can understand and manage your usage. You can also choose your supplier, and possibly find a better supply price, by visiting [maine.gov/mpuc](http://maine.gov/mpuc) or [maine.gov/meopa/electricity/electricity-supply](http://maine.gov/meopa/electricity/electricity-supply), or by calling the Maine Public Utilities Commission at 207.287.3831.

We are your energy delivery company. Other companies, not regulated by the MPUC, supply your power, which we deliver to you safely and reliably. We include the supply charges on your bill and pass your payments to the suppliers. You will see your supplier and their supply charges itemized on this page.

009007 2/2

